

CITY OF PHOENIX GENERAL NOTES FOR UTILITY CONSTRUCTION

- ALL UTILITY CONSTRUCTION SHALL CONFORM TO THE LATEST MARICOPA ASSOCIATION OF GOVERNMENTS (MAG) UNIFORM STANDARD SPECIFICATIONS AND DETAILS FOR PUBLIC WORKS CONSTRUCTION, AND THE CITY OF PHOENIX SUPPLEMENTS TO MAG.
- ALL WORK PERFORMED IN THE CITY OF PHOENIX RIGHTS-OF-WAY SHALL BE GOVERNED BY THE LATEST EDITION OF THE CITY OF PHOENIX TRAFFIC BARRICADE MANUAL.
- THIS SET OF PLANS WAS REVIEWED BY THE CITY OF PHOENIX UTILITY COORDINATION SECTION IN COMPLIANCE WITH CITY REQUIREMENTS. HOWEVER, SUCH REVIEW SHALL NOT PREVENT THE CITY FROM REQUIRING CORRECTION OF ERRORS FOUND TO BE IN VIOLATION OF ANY LAW, ORDINANCE OR CITY OF PHOENIX REQUIREMENT FOR UTILITY CONSTRUCTION IN THE RIGHTS-OF-WAY.
- THE CONTRACTOR SHALL HAVE A COPY OF THE APPROVED/STAMPED CONSTRUCTION PLANS AND APPROVED TRAFFIC CONTROL PLAN AT THE PROJECT SITE AT ALL TIMES.
- ALL UTILITIES CROSSING STREETS MUST BE BORED OR PUNCHED UNLESS PERMISSION TO OPEN CUT HAS BEEN GIVEN IN WRITING BY THE STREET TRANSPORTATION DIRECTOR.
- BEFORE STARTING ANY WORK ON A MAJOR OR COLLECTOR STREET, THE UTILITY COMPANY SHALL SCHEDULE A PRECONSTRUCTION MEETING WITH THE CITY OF PHOENIX STREET TRANSPORTATION DEPARTMENT'S UTILITY INSPECTION SECTION.
- THE CITY OF PHOENIX DOES NOT WARRANT ANY QUANTITIES SHOWN ON THESE PLANS.
- UTILITY COMPANIES SHALL COORDINATE ALLEY WORK WITH THE CITY OF PHOENIX PUBLIC WORKS DEPARTMENT'S SOLID WASTE DIVISION.
- THE UTILITY COMPANY SHALL CONTACT THE CITY OF PHOENIX STREET TRANSPORTATION DEPARTMENT'S UTILITY INSPECTION SECTION A MINIMUM OF 48 HOURS IN ADVANCE OF STARTING WORK, GIVING LOCATION AND PERMIT NUMBER IN ORDER TO SCHEDULE INSPECTIONS.
- ALL WORK REQUIRING ASPHALT REPLACEMENT, CONCRETE REPLACEMENT, OR RESURFACING ALLEYS IN THE CITY OF PHOENIX RIGHT-OF-WAY WILL REQUIRE A FINAL INSPECTION WITH THE UTILITY COMPANY REPRESENTATIVE AT TIME OF COMPLETION.
- MAINTAIN A MINIMUM SIX (6) FEET HORIZONTAL SEPARATION AND ONE (1) FOOT VERTICAL SEPARATION FROM ALL WATER AND SEWER MAINS, ALL MEASUREMENTS OUTSIDE TO OUTSIDE.
- CITY OF PHOENIX UTILITY INSPECTION SECTION RESERVES THE RIGHT, AT THEIR DISCRETION, TO REQUEST A LAND SURVEY OF THE PROPOSED IMPROVEMENTS, RUNNING LINE AND RIGHT-OF-WAY PER MAG SECTION 601.2.3 AND 608.4.3.

WARNING!!!

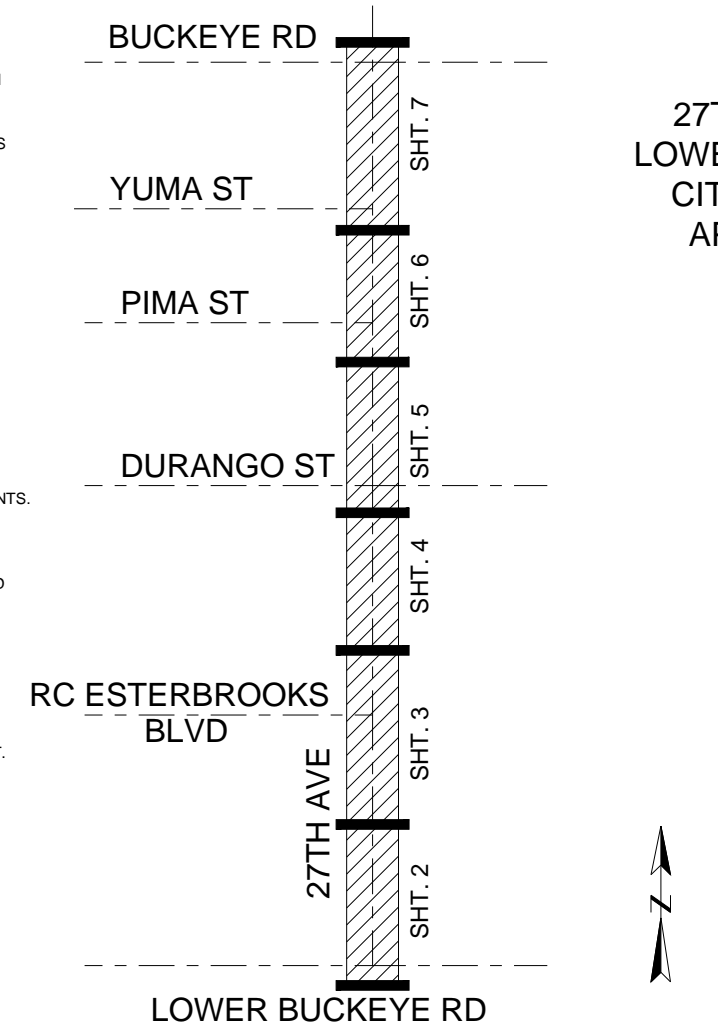
ALL DATA CONTAINED IN THIS DRAWING WAS BASED ON INFORMATION AVAILABLE AT THE TIME OF ITS PREPARATION. APS NEITHER ENCOURAGES RELIANCE ON, NOR WARRANTS, THE ACCURACY OF THE DRAWING. PLEASE CALL BLUE STAKE BEFORE DIGGING OR TRENCHING. FAILURE TO CONTACT BLUE STAKE MAY RESULT IN VIOLATIONS OF A.R.S. SS 40-360.21 AND 40-360.22A

ITEMS OF RESPONSIBILITY

- TO BE PROVIDED AND/OR INSTALLED BY THE CITY OF PHOENIX ("CITY") CONTRACTOR:**
 - ALL TRENCH MATERIAL AND TRENCH RELATED WORK INCLUDING BUT NOT LIMITED TO; TRENCHING, JACK & BORE, ASPHALT CUTTING AND CUTTING AND MILLING, BORING, SPOILS REMOVAL, BACKFILL MATERIAL MILLING, BORING, SPOILS REMOVAL, BACKFILL MATERIAL AND COMPACTION (PER APS T.A.D.C.S. MANUAL, SECTION 8601), ALL SURFACE RESTORATION (i.e., LANDSCAPING, SIDEWALKS, CURBS, GUTTERS, ASPHALT, ETC.) AS IT RELATES TO WORK PERFORMED ON THIS PROJECT BY THE CITY CONTRACTOR.
 - LABOR AND 2-SACK MATERIAL FOR THE CONCRETE ENCASEMENT OF THE DUCT BANK, UNLESS OTHERWISE NOTED.
 - ALL MISCELLANEOUS MATERIAL AND WORK, INCLUDING BUT NOT LIMITED TO; BARRICADING, SHORING, STEEL PLATING, AND TRAFFIC CONTROL.
 - ALL CONDUIT SHOWN TO BE INSTALLED IN ENERGIZED EQUIPMENT, WILL BE CAPPED AND LOCATED AT A POINT EITHER 2' FROM THE EQUIPMENT OR FROM THE BLUESTAKE MARKINGS FOR UNDERGROUND ELECTRIC CABLES. **WARNING: DO NOT ENTER ENERGIZED APS EQUIPMENT.**
 - LABOR TO EXPOSE AND ATTACH TO/OR REROUTE EXISTING EMPTY CONDUIT. REROUTING OF CONDUIT PRESENTLY IN USE SHALL BE PERFORMED BY THE CITY CONTRACTOR AFTER THE EXISTING ELECTRICAL CABLE HAS BEEN REMOVED BY THE APS FORCES.
 - ALL CONDUIT, AND RELATED MATERIAL, INCLUDING BUT NOT LIMITED TO; 2", 2-1/2", 3", 4" AND 5" DIAMETER PVC CONDUIT, CONDUIT SWEEPS, COUPLINGS, SPACERS, BORE SPACERS, REBAR, CAPS, PLUGS, ELECTRONIC MARKERS, PULL LINE, PRIMER AND GLUE.
 - SURVEYING OF CONSTRUCTION CENTER LINE STAKING, ALL VERTICAL CONTROL AND STAKING OF DEPTH REQUIREMENTS FOR ALL APS TRENCHES. TRENCH ALIGNMENTS AND DEPTHS SHALL BE ADJUSTED TO PROVIDE A MINIMUM OF TWO (2) FEET VERTICAL CLEARANCE FROM PROPOSED CONFLICTS, AND ONE (1) FOOT VERTICAL CLEARANCE FROM EXISTING CONFLICTS. APS REQUIRES TWO (2) FEET HORIZONTAL ALIGNMENT CLEAR FROM ALL EXISTING AND PROPOSED CONFLICTS.
 - ALL POLES, MAST ARMS, LUMINARIES, SECONDARY CABLE AND FUSES AS IT RELATES TO THE STREET LIGHT INSTALLATION ON THIS PROJECT.
 - ALL GROUND RODS (OR ALTERNATE GROUNDING MATERIAL FOR STREET LIGHTS)
- TO BE PROVIDED BY THE ARIZONA PUBLIC SERVICE COMPANY AND INSTALLED BY THE CITY OF PHOENIX ("CITY") CONTRACTOR:**
 - J-BOXES, PULL LINE, PLUGS, AND ELECTRONIC MARKERS. THE CITY CONTRACTOR MUST SCHEDULE WITH APS WAREHOUSE FOR MATERIAL PICKUP. CONTACT ARLEN SCORSE AT 602-371-6017 TO SCHEDULE AN APPOINTMENT. A LATE ARRIVAL TIME OF MORE THAN TEN MINUTES FROM YOUR SCHEDULED TIME, MAY RESULT IN AN APS CANCELLATION OF THE APPOINTMENT, DEPENDING ON THE CONGESTION AND WORKLOAD PRESENT AT THE APS WAREHOUSE.
- TO BE PROVIDED BY ARIZONA PUBLIC SERVICE COMPANY AND INSTALLED BY ARIZONA PUBLIC SERVICE COMPANY:**
 - SURVEY FOR HORIZONTAL CONTROL OF APS RELATED TRENCHES AND EQUIPMENT. CITY CONTRACTOR TO CALL 602-371-6945 TEN (10) WORKING DAYS IN ADVANCE TO NEEDING CONTROL FOR TRENCHING.
 - CONDUIT SYSTEM INSPECTION FOR; TRENCH WORK, CONDUIT INSTALLATION, MISC. WORK AND INSTALLATIONS. CALL THE APS LEAD INSPECTOR, CHARLIE CRAWFORD @ 602-371-6512 (CELL 928-308-4113) A MINIMUM OF FIVE (5) WORKING DAYS PRIOR TO THE START OF TRENCHING.
 - ALL TRENCH, BELLHOLES, AND BACKFILL AS REQUIRED TO INSTALL CONDUIT SWEEPS INTO APS ENERGIZED EQUIPMENT.

GENERAL TRENCHING NOTES

- ALL WORK TO COMPLY WITH THE APS UNDERGROUND DISTRIBUTION CONSTRUCTION STANDARDS (T.A.D.C.S.) MANUAL.
- * DENOTES BACKFILL AND COMPACTION PER APS SPECIFICATIONS AS DEFINED IN THE 8601 SECTION OF THE APS T.A.D.C.S. MANUAL.
- MAINTAIN MINIMUM 1' VERTICAL SEPARATION BETWEEN ALL APS FACILITIES (I.E. DUCT BANK, CONDUIT AND CABLE) AND ANY UNDERGROUND CONFLICTS.
- THE USABILITY OF ALL CONDUIT SYSTEMS MUST BE ENSURED. WHERE THE PARTY RESPONSIBLE FOR INSTALLING THE CONDUIT SHALL MANDRELL, MANDRELLING SHALL BE PER APS SPECIFICATIONS AS DEFINED IN THE 8601 SECTION OF THE APS T.A.D.C.S. MANUAL.
- WHERE THE 8895.MR. 1/2" WOVEN KEVLAR, PRELUBRICATED FLAT STRAP PULL LINE, ARE TO BE INSTALLED, THEY SHALL BE PROVIDED BY APS AND INSTALLED BY CONTRACTOR.
- TRENCH DEPTHS SHOWN ON THIS SHEET ARE MINIMUM REQUIREMENTS.
- THE TRENCH BOTTOM SHALL BE SMOOTH, FLAT AND WITHOUT SURFACE IRREGULARITIES, OTHERWISE A SUFFICIENT AMOUNT OF BEDDING MATERIAL SHALL BE INSTALLED TO PROVIDE THE REQUIRED SURFACE. THE BEDDING MATERIAL SHALL NOT CONTAIN ROCKS LARGER THAN 3/4" IN THEIR GREATEST DIMENSION FOR JACKETED OR ABRASION-RESISTANT CABLE AND 1-1/2" IN THEIR GREATEST DIMENSION FOR RIGID CONDUIT SYSTEMS. THE BEDDING MATERIAL SHALL CONTAIN A SUFFICIENT VOLUME OF FINES TO FILL ALL VOIDS.
- CONTRACTOR NOT TO TRENCH CLOSER THAN 2' TO APS FACILITIES (EXCEPT 4' TO POLES) UNLESS AN APS REPRESENTATIVE IS PRESENT.
- WHEN PASSING OVER OR UNDER CONFLICTS, TRENCH NOT TO BE SLOPED STEEPER THAN 1:12 RATIO OR MINIMUM RADIUS OF 140 TIMES THE OUTSIDE DIAMETER OF THE CONDUIT.
- TRENCH WIDTHS SHOWN ARE MINIMUM REQUIREMENTS BASED ON CONDUIT SIZES. WHERE A WORKMAN MUST ENTER THE TRENCH WIDTHS SHALL BE INCREASED PER 8620.
- CONDUITS FOR FEEDER PRIMARY OR STREET LIGHTS MAY BE INSTALLED AT SAME LEVEL PROVIDED THAT THERE IS A 1/2" MIN. HORIZONTAL SEPARATION BETWEEN CONDUITS AND MIN. COVER REQUIREMENTS PER 8610 ARE MAINTAINED.



CITY OF PHOENIX STREET LIGHTING 27TH AVE IMPROVEMENTS LOWER BUCKEYE TO BUCKEYE CITY PROJECT:ST85100341 APS PROJECT:WA410049

APS UTILITIES KEY

EXISTING	PROPOSED
W	WATER
S	SEWER
G	GAS
SD	STORM DRAIN
IRR	IRRIGATION
TS	TRAFFIC SIGNAL
T	TELE
CATV	CATV
FO	FIBER
W	WATER
S	SEWER
G	GAS
SD	STORM DRAIN
IRR	IRRIGATION
TS	TRAFFIC SIGNAL
T	TELE
CATV	CATV
FO	FIBER
UG ELECTRIC NOMINAL TRANSMISSION (69KV)*	
UG ELECTRIC NOMINAL PRIMARY (12.470/7.200V)*	
UG ELECTRIC NOMINAL SECONDARY/SERVICE (120/240V)*	
OH ELECTRIC NOMINAL TRANSMISSION (69KV)*	
OH ELECTRIC NOMINAL PRIMARY (12.470/7.200V)*	
OH ELECTRIC NOMINAL SECONDARY/SERVICE (120/240V)*	
CONDUIT	
TRENCH RUNNING LINE	
* UNLESS OTHERWISE NOTED	

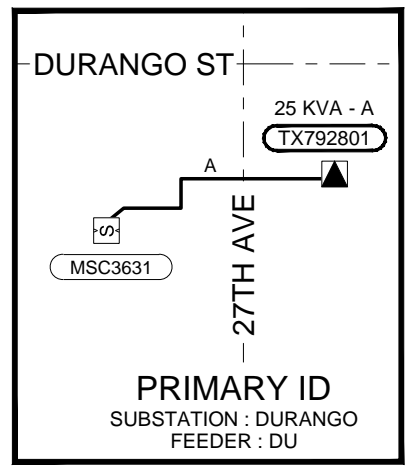
APS SYMBOLS LEGEND

EXISTING EQUIPMENT	PROPOSED EQUIPMENT	DESCRIPTION
[Symbol]	[Symbol]	- PADMOUNTED TRANSFORMER
[Symbol]	[Symbol]	- SWITCHING CABINETS
[Symbol]	[Symbol]	- 10 SWITCHING CABINET
[Symbol]	[Symbol]	- OH/UG CAPACITOR BANK
[Symbol]	[Symbol]	- J-BOX / PULL BOX
[Symbol]	[Symbol]	- MANHOLES
[Symbol]	[Symbol]	- OH TRANSFORMER
[Symbol]	[Symbol]	- OH SWITCH (KPF)
[Symbol]	[Symbol]	- APS OWNED POLE
[Symbol]	[Symbol]	- APS OWNED STEEL POLE
[Symbol]	[Symbol]	- APS OWNED JOINT USE POLE
[Symbol]	[Symbol]	- DIP (TRANSITION) POLE
[Symbol]	[Symbol]	- STREET LIGHT
[Symbol]	[Symbol]	- DUSK TO DAWN LIGHT

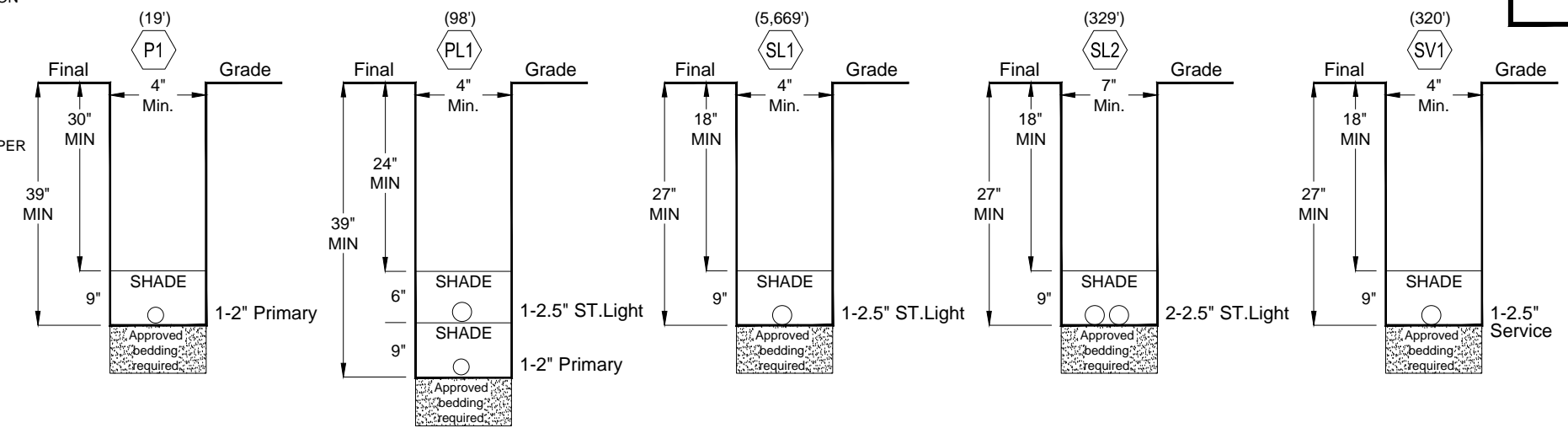
STREETLIGHT SUMMARY

SYM	#/TYPE POLE	#/TYPE LAMP	INVEST.BY	INST/REM
(A)	27 / 1944.38X	30 / 9,250 LED	O	I
(B)	9 / 1944.38X	10 / 18,200 LED	O	I
(C)		4 / 30,000 HPS	O	R

BILL TO: City of Phoenix

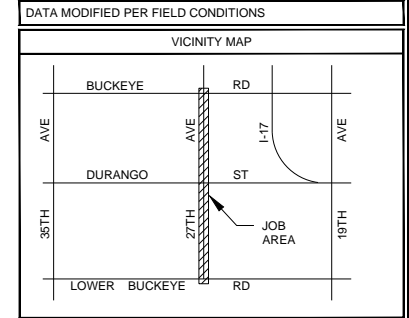


TRENCH DETAILS



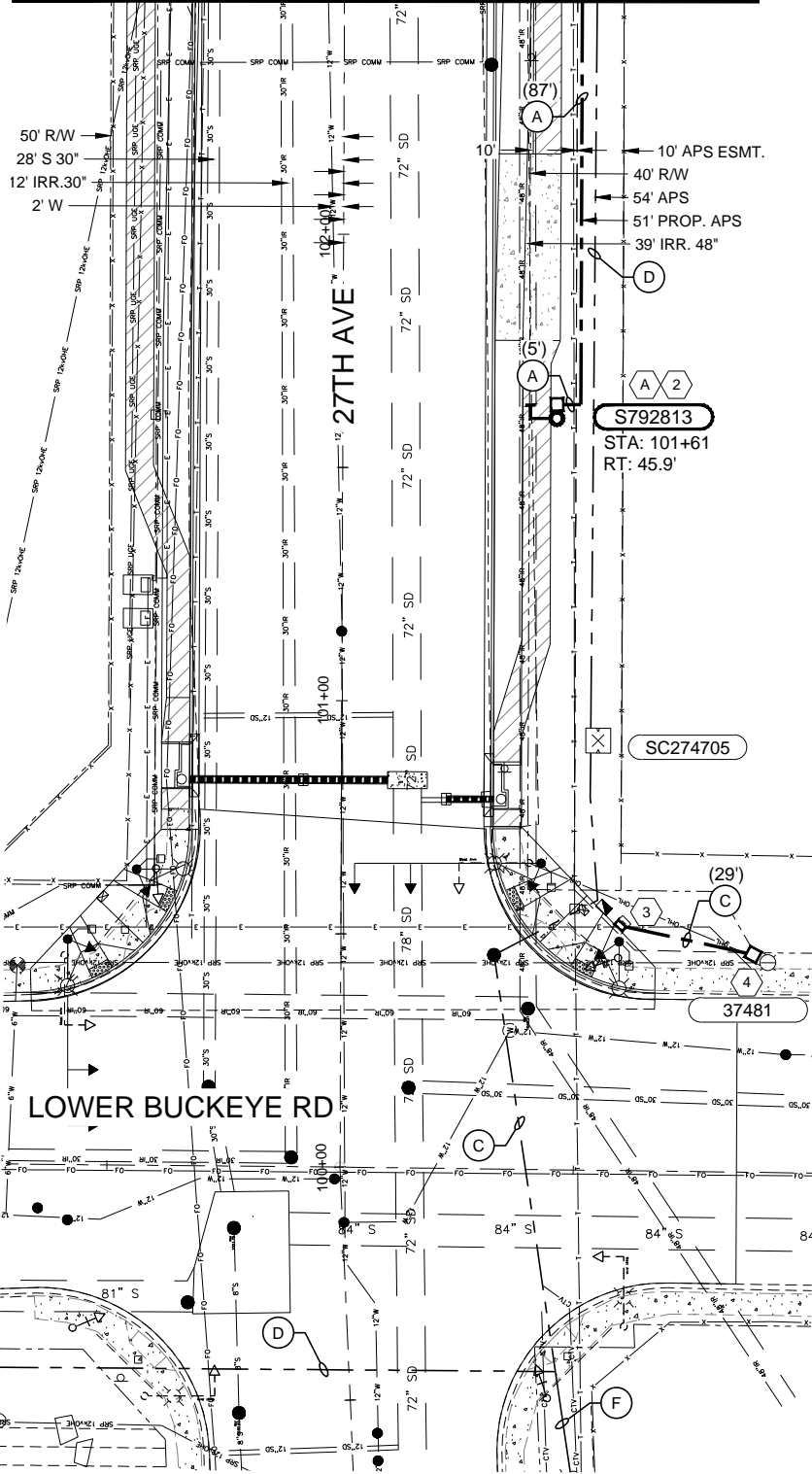
(INSTALL)
TOTAL WIRE DATA FOOTAGE:
PRIMARY
6215.UA1/0T = .140'
SECONDARY / SERVICE / ST. LT. / D-D
6220.UA1/0AV = .350'
6220.UA1/0AL = 8.002'

Contact Arizona 811 at least two full working days before you begin excavation
ARIZONA 811
Call 811 or click Arizona811.com

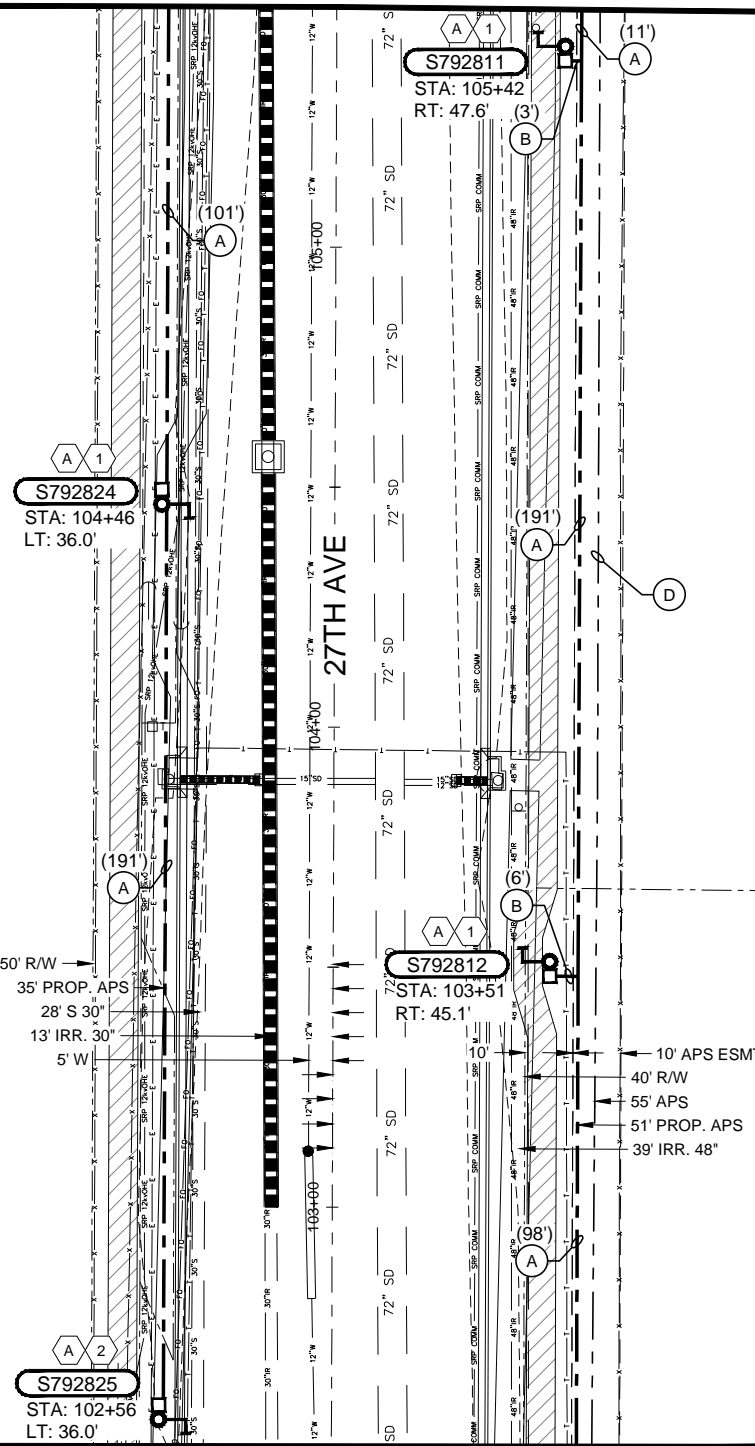


T	01.0N	R	02.0E	Sec	14	NE	1/4	MAP#	8-22
T	01.0N	R	02.0E	Sec	14	SE	1/4	MAP#	7-22
T	01.0N	R	02.0E	Sec	13	NW	1/4	MAP#	8-23
T	01.0N	R	02.0E	Sec	13	SW	1/4	MAP#	7-23
T		R		Sec			1/4	MAP#	
CONTACT: BOBBY GARZA									
PHONE: 602-371-7989 PGR/MOBILE:									
INSPECTOR: CHARLIE CRAWFORD									
PHONE: 602-371-6512 PGR/MOBILE:									
NO. DATE DESCRIPTION BY									
aps 27TH AVE: BUCKEYE TO LOWER BUCKEYE CITY OF PHOENIX STREET LIGHTING									
WO#: WA410049					DATE: 11/30/2018				
BY: ARUSI (JA)					SCALE: 1:20				
FILENAME: WA410049.DWG					SHEET 1 OF 8				

MATCHLINE STA:102+50 SEE BOTTOM MIDDLE

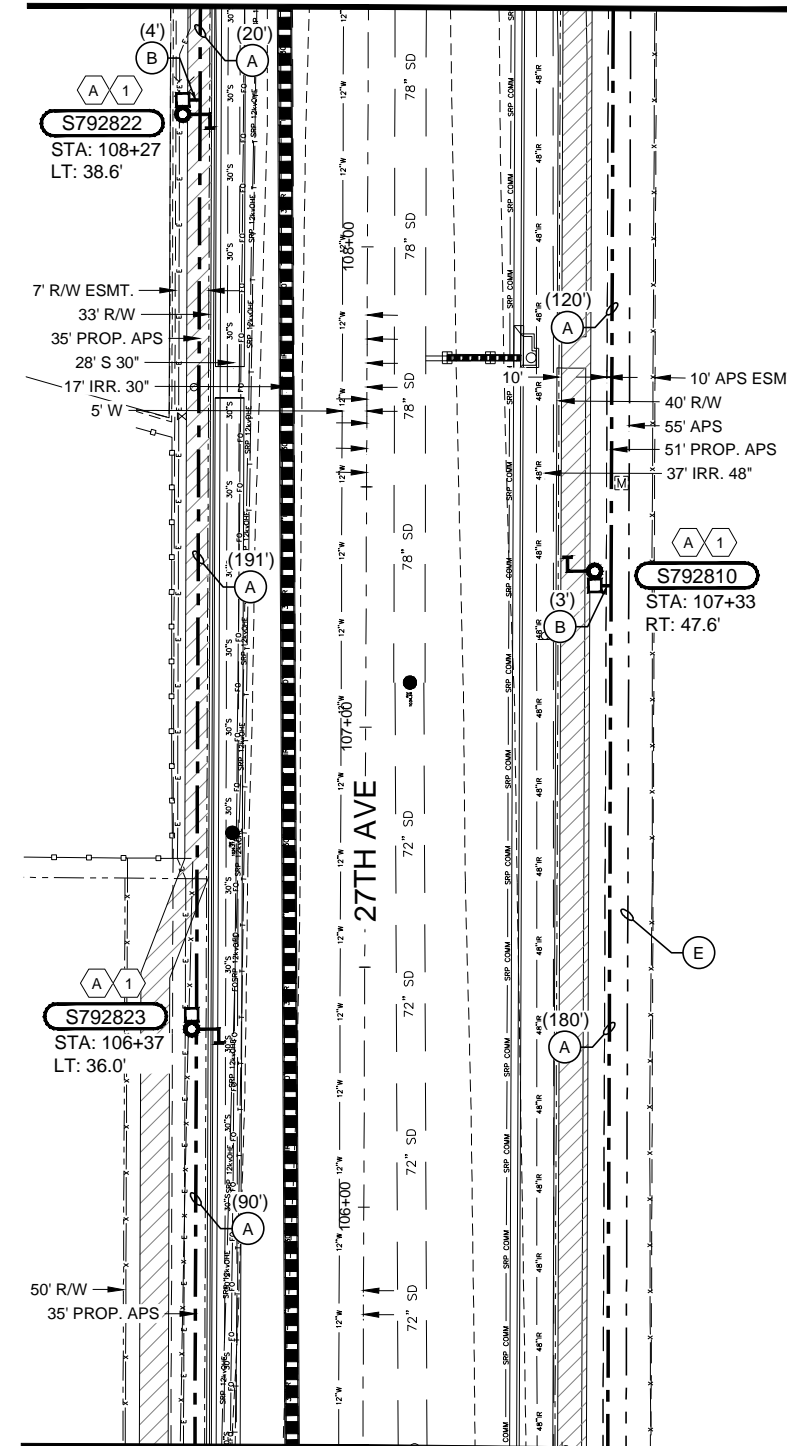


MATCHLINE STA:105+50 SEE BOTTOM RIGHT



MATCHLINE STA:102+50 SEE TOP LEFT

MATCHLINE STA:108+50 SEE SHEET 3



MATCHLINE STA:105+50 SEE MIDDLE LEFT

CITY OF PHOENIX
STREET LIGHTING
27TH AVE IMPROVEMENTS
LOWER BUCKEYE TO BUCKEYE
CITY PROJECT:ST85100341
APS PROJECT:WA410049

TRENCH & CABLE NOTES:
(APPLIES TO THIS SHEET ONLY)

- 1-UA1/0AL-2.5"
- (A) =
- 2-UA1/0AL-2.5"(2)
- (B) =
- 1-UA1/0AV-2.5"
- (C) =
- (D) = 6-UA750T-5"(2)
- (E) = 9-UA750T-DU5"(3)+DU5"
- (F) = 3-UA750T-5"+C5"

CONSTRUCTION NOTES:

6 LOC. THIS SHEET

1 INSTALL
CITY OF PHOENIX TO PROVIDE & INSTALL
POLE, MAST ARM & LUMINAIRE.
APS TO PROVIDE & INSTALL:
2727.3L (120/240V)
2729.A3L
8140.4
APS TO PROVIDE & CITY TO INSTALL:
8655.NL
8881.EQL (2)

2 LOC. THIS SHEET

2 INSTALL
CITY OF PHOENIX TO PROVIDE & INSTALL
POLE, MAST ARM & LUMINAIRE.
APS TO PROVIDE & INSTALL:
2727.3L (120/240V)
2729.A3L
8140.4
APS TO PROVIDE & CITY TO INSTALL:
8655.NL
8881.EQL

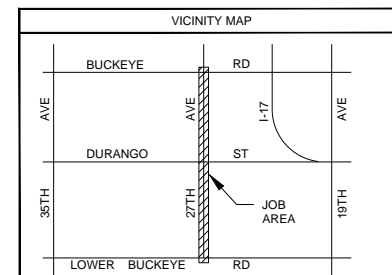
3 INSTALL
9030.B (120/240V)
2702.V
8881.EQV

37481 **4 REMOVE**
8119.A1/0C
6013.A1/0C

INSTALL
8655.NG (120/240V)
2727.3L
2729.A3L
8881.EQV
PLACE NEW J-BOX AT BASE OF
POLE. TRAIN BACK EXISTING
CONDUCTOR INTO NEW J-BOX &
SPLICE WITH NEW CONDUCTOR.
THIS IS NECESSARY TO CONTINUE
POWER FEED TO NEW METER.

WARNING!!!

ALL DATA CONTAINED IN THIS DRAWING WAS BASED ON INFORMATION AVAILABLE AT THE TIME OF ITS PREPARATION. APS NEITHER ENCOURAGES RELIANCE ON, NOR WARRANTS, THE ACCURACY OF THE DRAWING. PLEASE CALL BLUE STAKE BEFORE DIGGING OR TRENCHING. FAILURE TO CONTACT BLUE STAKE MAY RESULT IN VIOLATIONS OF A.R.S. SS 40-360.21 AND 40-360.22A



T	01.0N	R	02.0E	Sec 14	NE 1/4	MAP# 8-22
T	01.0N	R	02.0E	Sec 14	SE 1/4	MAP# 7-22
T	01.0N	R	02.0E	Sec 13	NW 1/4	MAP# 8-23
T	01.0N	R	02.0E	Sec 13	SW 1/4	MAP# 7-23
T	R	Sec	1/4	MAP#		

CONTACT: BOBBY GARZA
PHONE: 602-371-7989 PGR/MOBILE:
INSPECTOR: CHARLIE CRAWFORD
PHONE: 602-371-6512 PGR/MOBILE:

NO.	DATE	DESCRIPTION	BY

aps 27TH AVE: BUCKEYE TO LOWER BUCKEYE
CITY OF PHOENIX STREET LIGHTING

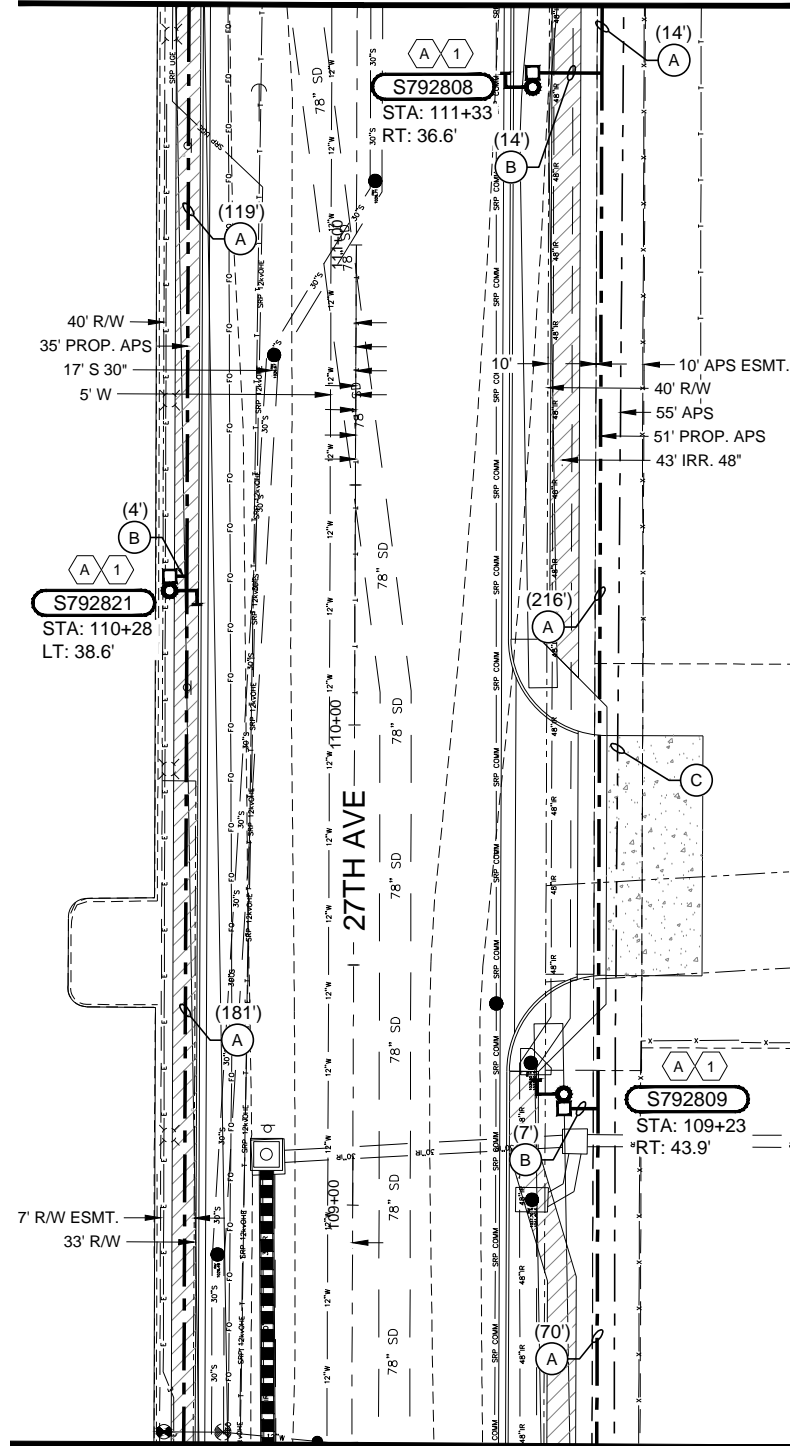
WO#: WA410049 DATE: 11/30/2018
BY: ARUSI (JA) SCALE: 1:20
FILENAME: WA410049.DWG SHEET 2 OF 8

Contact Arizona 811 at least two full working days before you begin excavation

Call 811 or click Arizona811.com

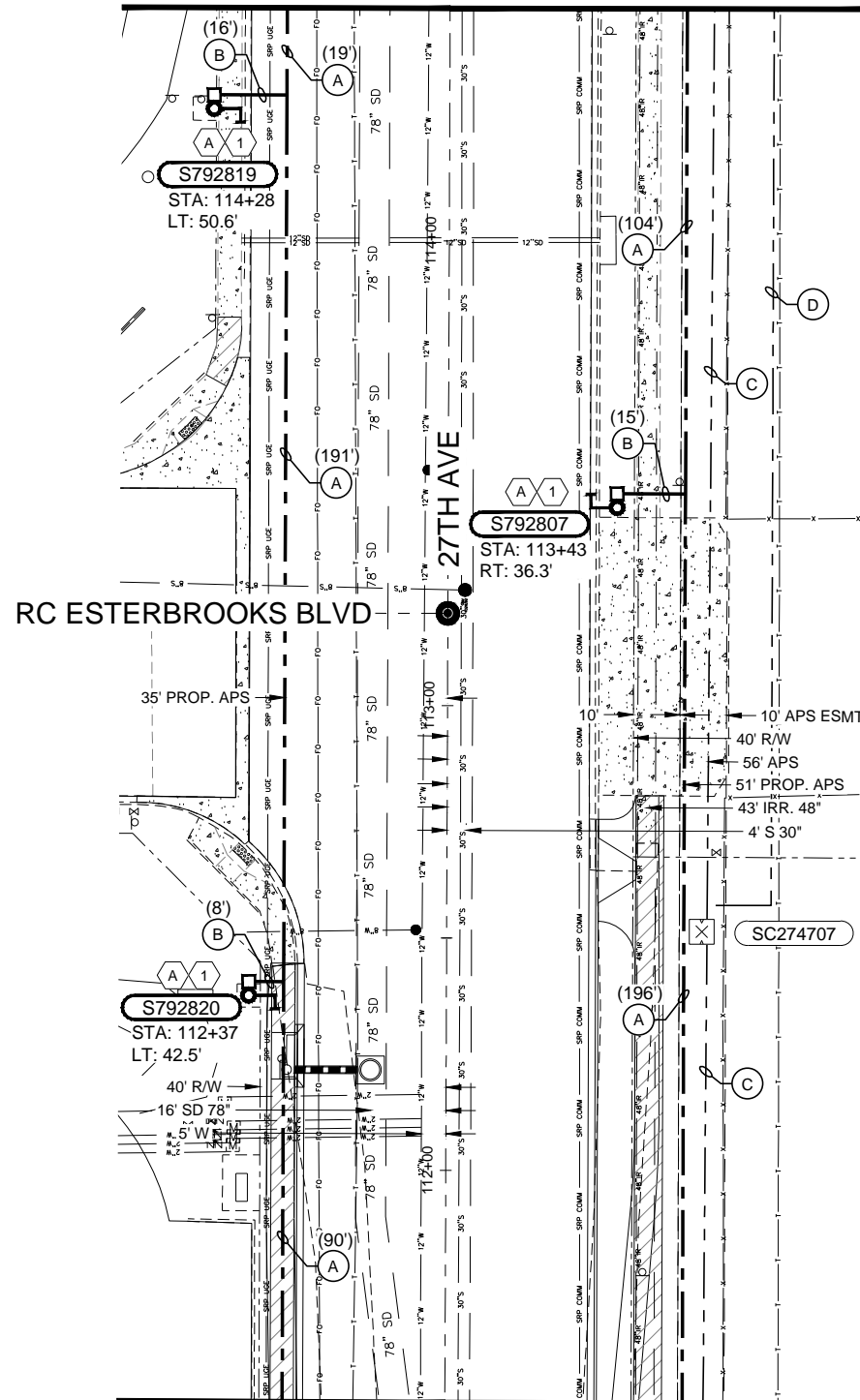
CITY OF PHOENIX
STREET LIGHTING
27TH AVE IMPROVEMENTS
LOWER BUCKEYE TO BUCKEYE
CITY PROJECT:ST85100341
APS PROJECT:WA410049

MATCHLINE STA:111+50 SEE BOTTOM MIDDLE



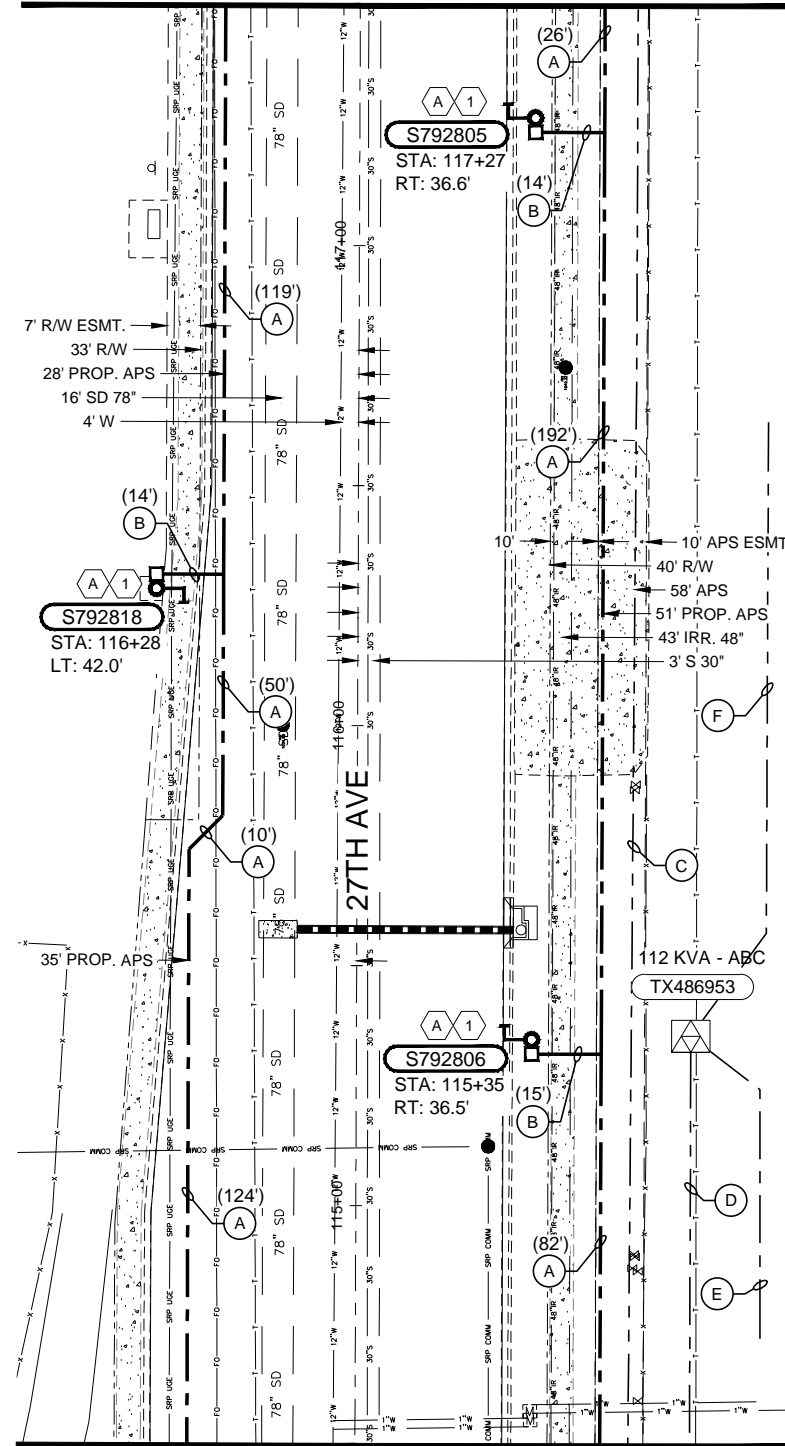
MATCHLINE STA:108+50 SEE SHEET 2

MATCHLINE STA:114+50 SEE BOTTOM RIGHT



MATCHLINE STA:111+50 SEE TOP RIGHT

MATCHLINE STA:117+50 SEE SHEET 4



MATCHLINE STA:114+50 SEE TOP MIDDLE

TRENCH & CABLE NOTES:
(APPLIES TO THIS SHEET ONLY)

- 1-UA1/0AL-2.5"
- (A) =
- 2-UA1/0AL-2.5"(2)
- (B) =
- (C) = 6-UA750T-5"(2)
- (D) = 3-UA1/0T-4"
- (E) = 1-UA4/0D-4"
- (F) = 2-UA4/0D-4"

CONSTRUCTION NOTES:

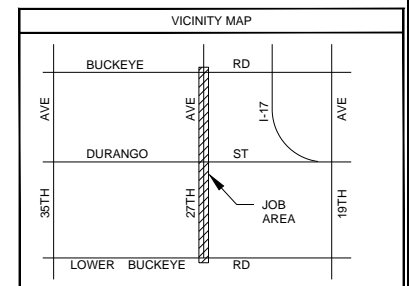
- 9 LOC. THIS SHEET
- 1 INSTALL
- CITY OF PHOENIX TO PROVIDE & INSTALL POLE, MAST ARM & LUMINAIRE.
- APS TO PROVIDE & INSTALL: 2727.3L (2) (120/240V) 2729.A3L 8140.4
- APS TO PROVIDE & CITY TO INSTALL: 8655.NL 8881.EQL (2)

WARNING!!!

ALL DATA CONTAINED IN THIS DRAWING WAS BASED ON INFORMATION AVAILABLE AT THE TIME OF ITS PREPARATION. APS NEITHER ENCOURAGES RELIANCE ON, NOR WARRANTS, THE ACCURACY OF THE DRAWING. PLEASE CALL BLUE STAKE BEFORE DIGGING OR TRENCHING. FAILURE TO CONTACT BLUE STAKE MAY RESULT IN VIOLATIONS OF A.R.S. SS 40-360.21 AND 40-360.22A

Contact Arizona 811 at least two full working days before you begin excavation

Call 811 or click Arizona811.com

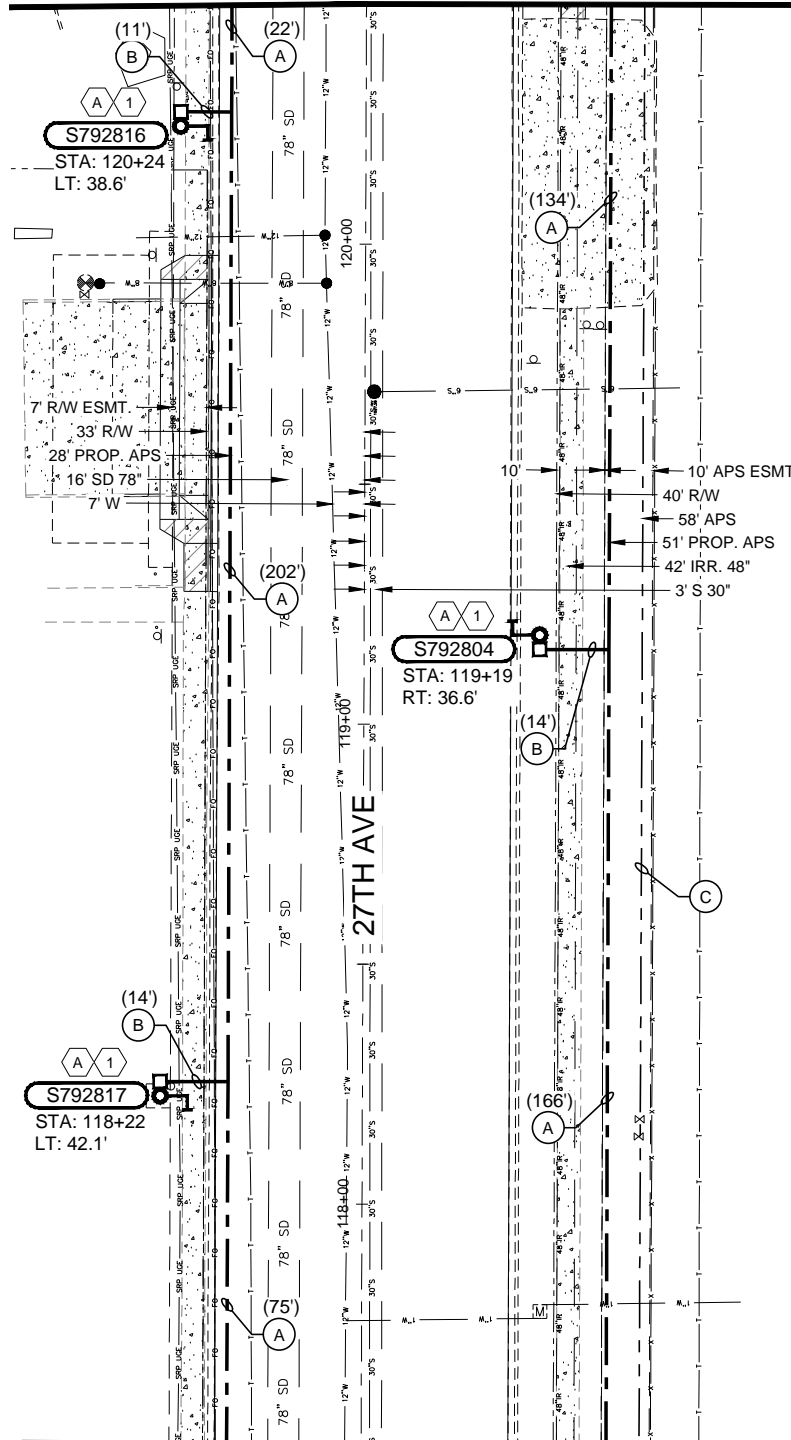


T	01.0N	R	02.0E	Sec 14	NE 1/4	MAP# 6-22
T	01.0N	R	02.0E	Sec 14	SE 1/4	MAP# 7-22
T	01.0N	R	02.0E	Sec 13	NW 1/4	MAP# 8-23
T	01.0N	R	02.0E	Sec 13	SW 1/4	MAP# 7-23
T		R		Sec	1/4	MAP#

CONTACT: BOBBY GARZA			
PHONE: 602-371-7989		PGR/MOBILE:	
INSPECTOR: CHARLIE CRAWFORD			
PHONE: 602-371-6512		PGR/MOBILE:	
NO.	DATE	DESCRIPTION	BY
27TH AVE: BUCKEYE TO LOWER BUCKEYE			
CITY OF PHOENIX STREET LIGHTING			
WO#: WA410049	DATE: 11/30/2018		
BY: ARUSI (JA)	SCALE: 1:20		
FILENAME: WA410049.DWG	SHEET	3	OF 8

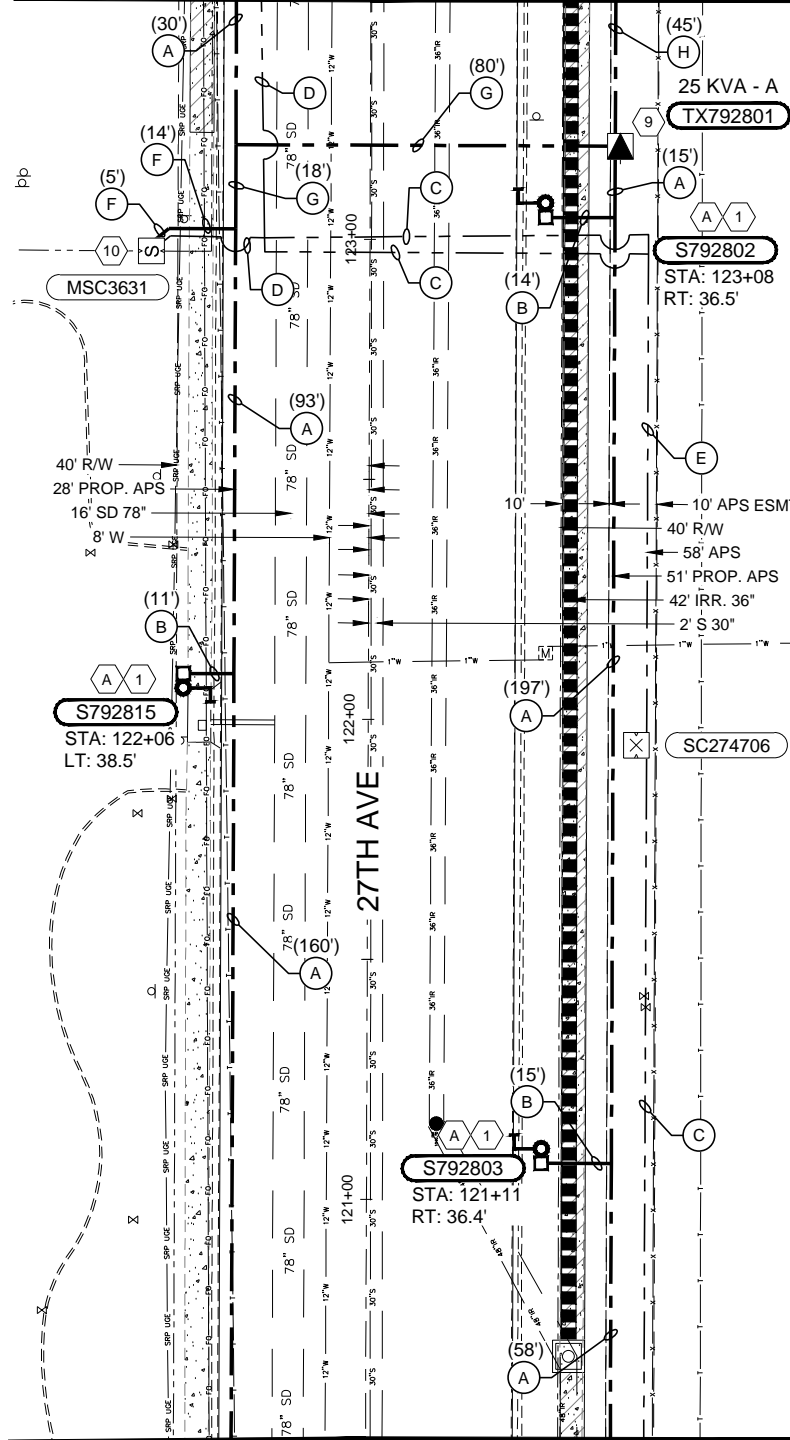
CITY OF PHOENIX
STREET LIGHTING
27TH AVE IMPROVEMENTS
LOWER BUCKEYE TO BUCKEYE
CITY PROJECT:ST85100341
APS PROJECT:WA410049

MATCHLINE STA:120+50 SEE BOTTOM MIDDLE



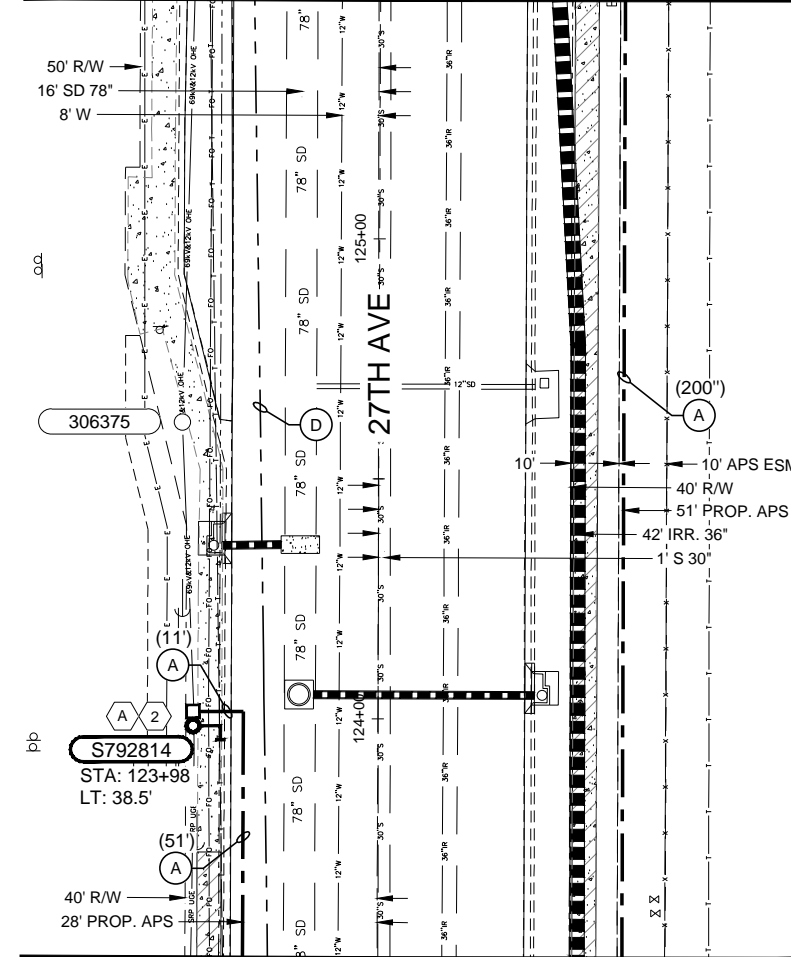
MATCHLINE STA:117+50 SEE SHEET 3

MATCHLINE STA:123+50 SEE BOTTOM RIGHT



MATCHLINE STA:117+50 SEE TOP LEFT

MATCHLINE STA:125+50 SEE SHEET 5



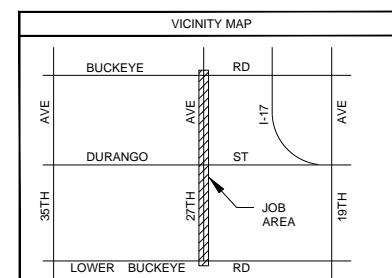
MATCHLINE STA:117+50 SEE TOP MIDDLE

TRENCH & CABLE NOTES:
(APPLIES TO THIS SHEET ONLY)

- 1-UA1/0AL-2.5"
(A) =
- 2-UA1/0AL-2.5"(2)
(B) =
- 6-UA750T-5"(2)
(C) =
- 18-UA750T-DU5"(6)
(D) =
- 12-UA750T-DU"(3)
(E) =
- 1-UA1/0T-2"
(F) =
- 1-UA1/0T-2"
+1-UA1/0AL-2.5"
(G) =
- 1-UA1/0AL-2.5"
(H) =

CONSTRUCTION NOTES:

- 6 LOC. THIS SHEET **INSTALL**
CITY OF PHOENIX TO PROVIDE & INSTALL
POLE, MAST ARM & LUMINAIRE.
APS TO PROVIDE & INSTALL:
2727.3L (2) (120/240V)
2729.A3L
8140.4
APS TO PROVIDE & CITY TO INSTALL:
8655.NL
8881.EQL (2)
- TX792801 **INSTALL**
7626.B031 (12470/7,700V)
7922
8881.DQ
8881.EQ (3)
8890.FD
8890.GC (3)
- MSC3631 **INSTALL**
2752.AJA1/0T (12470/7,700V)
8881.DQ
8890.FD
- 1 LOC. THIS SHEET **INSTALL**
CITY OF PHOENIX TO PROVIDE & INSTALL
POLE, MAST ARM & LUMINAIRE.
APS TO PROVIDE & INSTALL:
2727.3L (120/240V)
2729.A3L
8140.4
APS TO PROVIDE & CITY TO INSTALL:
8655.NL
8881.EQL



T	01.0N	R	02.0E	Sec	14	NE	1/4	MAP#	8-22
T	01.0N	R	02.0E	Sec	14	SE	1/4	MAP#	7-22
T	01.0N	R	02.0E	Sec	13	NW	1/4	MAP#	8-23
T	01.0N	R	02.0E	Sec	13	SW	1/4	MAP#	7-23

T	R	Sec	1/4	MAP#
CONTACT: BOBBY GARZA				
PHONE: 602-371-7989 PGR/MOBILE:				
INSPECTOR: CHARLIE CRAWFORD				
PHONE: 602-371-6512 PGR/MOBILE:				

NO.	DATE	DESCRIPTION	BY

WARNING!!!

ALL DATA CONTAINED IN THIS DRAWING WAS BASED ON INFORMATION AVAILABLE AT THE TIME OF ITS PREPARATION. APS NEITHER ENCOURAGES RELIANCE ON, NOR WARRANTS, THE ACCURACY OF THE DRAWING. PLEASE CALL BLUE STAKE BEFORE DIGGING OR TRENCHING. FAILURE TO CONTACT BLUE STAKE MAY RESULT IN VIOLATIONS OF A.R.S. SS 40-360.21 AND 40-360.22A

Contact Arizona 811 at least two full working days before you begin excavation

Call 811 or click Arizona811.com

27TH AVE: BUCKEYE TO LOWER BUCKEYE
CITY OF PHOENIX STREET LIGHTING

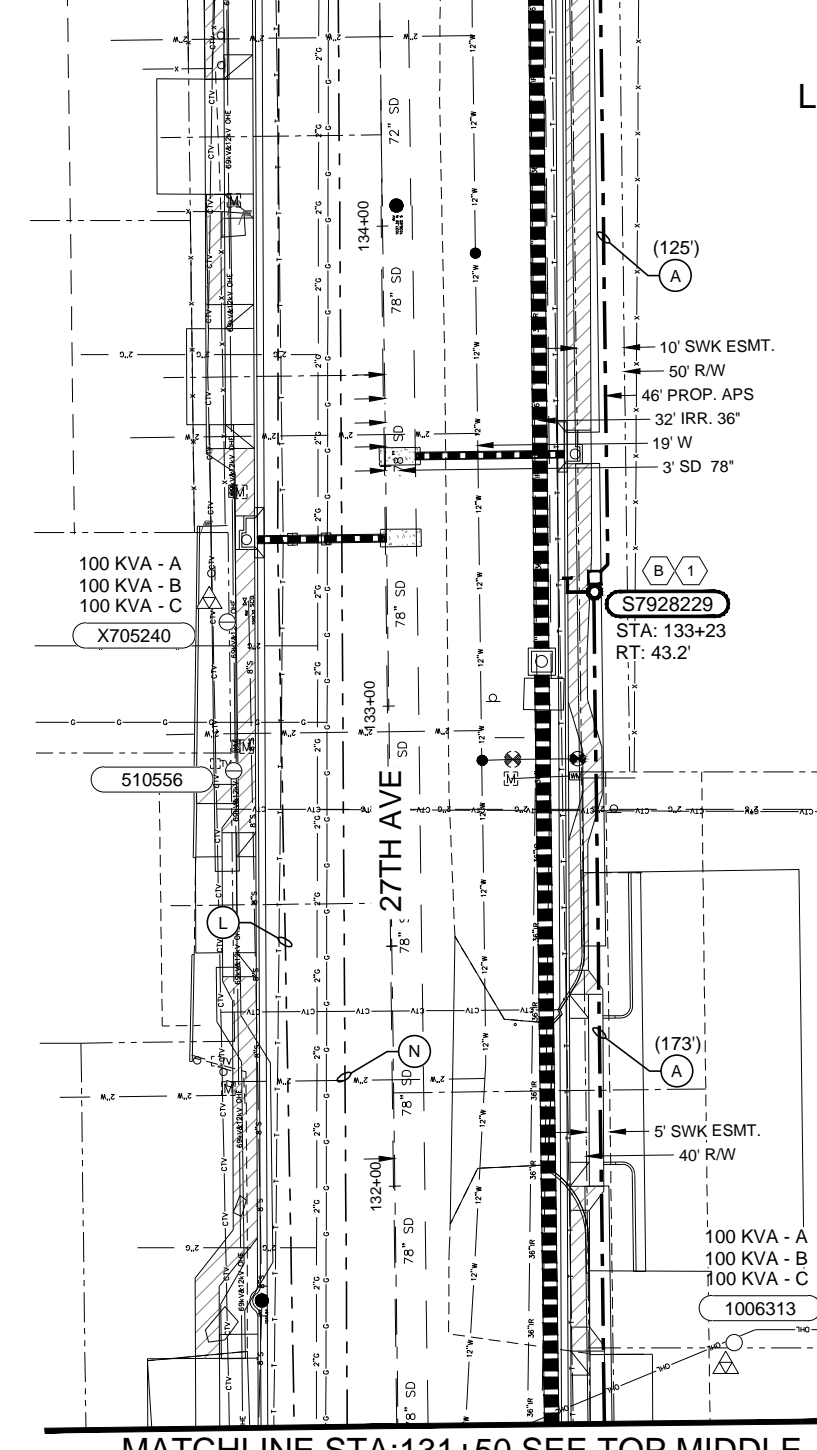
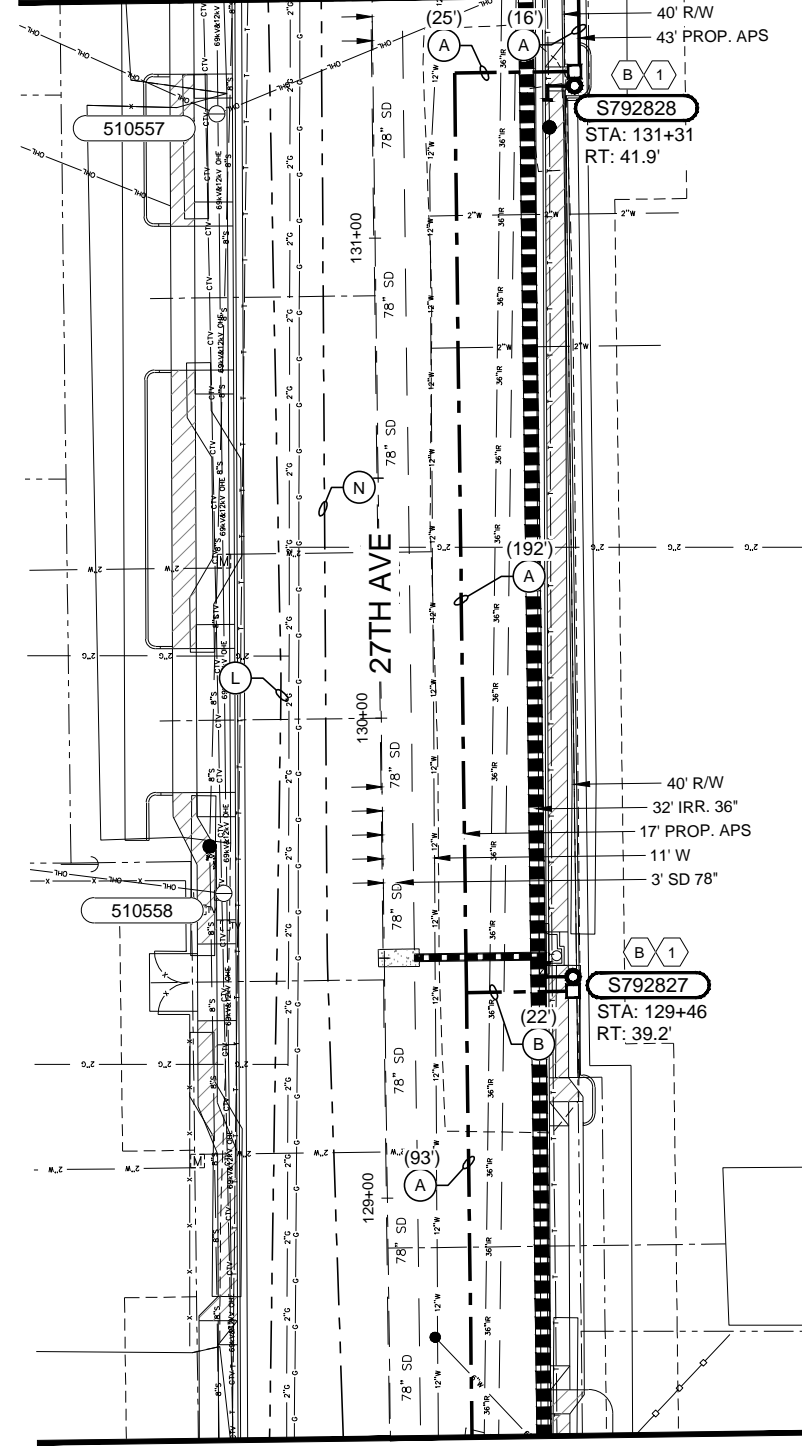
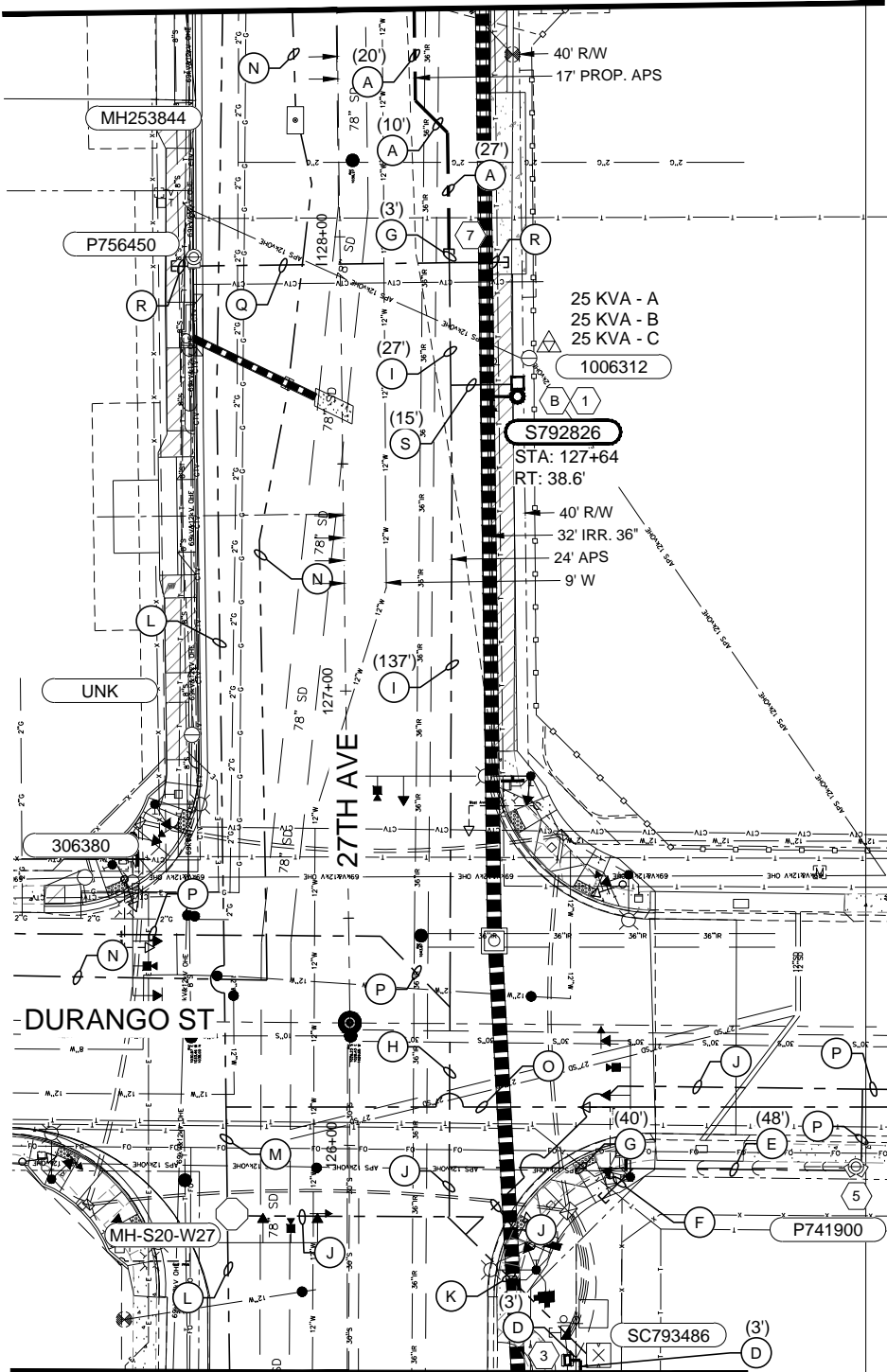
WO#: WA410049 DATE: 11/30/2018
BY: ARUSI (JA) SCALE: 1:20
FILENAME: WA410049.DWG SHEET 4 OF 8

MATCHLINE STA:128+50 SEE BOTTOM MIDDLE

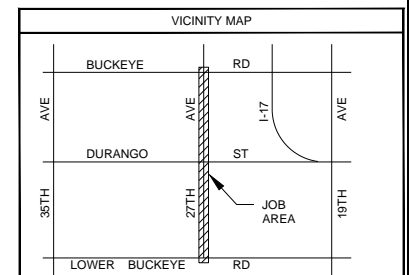
MATCHLINE STA:131+50 SEE BOTTOM RIGHT

MATCHLINE STA:134+50 SEE SFEET 6

CITY OF PHOENIX
STREET LIGHTING
27TH AVE IMPROVEMENTS
LOWER BUCKEYE TO BUCKEYE
CITY PROJECT:ST85100341
APS PROJECT:WA410049



- CONSTRUCTION NOTES:**
- 4 LOC. THIS SHEET **1** **INSTALL**
CITY OF PHOENIX TO PROVIDE & INSTALL POLE, MAST ARM & LUMINAIRE.
APS TO PROVIDE & INSTALL:
2727.3L (2) (120/240V)
2729.A3L
8140.4
APS TO PROVIDE & CITY TO INSTALL:
8655.NL
8881.EQL (2)
 - METER THIS SHEET **3** **INSTALL**
9030.B (120/240V)
2702.V
8881.EQV
 - P741900 **5** **INSTALL**
5055.GP5UA1/0AL (120/240V)
 - 6** **INSTALL**
N/A
 - STUB **7** **INSTALL**
8880.DL
LOCATE & ATTACH TO EXISTING C2.5"



MATCHLINE STA:125+50 SEE SHEET 4

MATCHLINE STA:128+50 SEE TOP LEFT

MATCHLINE STA:131+50 SEE TOP MIDDLE

TRENCH & CABLE NOTES:
(APPLIES TO THIS SHEET ONLY)

- | | | | |
|--------------------------------|---|--|--|
| A = 1-UA1/0AL-2.5" (SL1 681) | D = 1-UA1/0AV-2.5" (SV1 6) | I = 6-UA1100Z-DU5*(4) / 6-UA1100Z-DU5*(4) +C2.5" (164) | P = 6-UA1100Z-DU5*(2) |
| B = 2-UA1/0AL-2.5*(2) (SL2 22) | E = C2.5*(3) / 1-UA1/0AV-2.5" +1-UA4/OBL-2.5" +1-UA1/0AL-2.5" (48') | J = 12-UA1100Z-DU5*(4) | Q = 6-UA1100Z-DU5*(2) +C2*(3) |
| C = N/A | F = C2.5*(2) | K = 24-UA1100Z-DU5*(8) | R = C2*(3) |
| | G = C2.5*(2) / 1-UA1/0AL-2.5" (40') | L = 18-UA750T-DU5*(6) | S = C2.5*(2) / 2-UA1/0AL-2.5*(2) (15') |
| | H = 12-UA1100Z-DU5*(4) / 12-UA1100Z-DU5*(4) +C2.5" (35') | M = 30-UA750T-DU5*(10) | |
| | | N = 9-UA750T-DU5*(3)+DU5" | |
| | | O = 6-UA750T-DU5*(4)+DU5*(2) | |

WARNING!!!
ALL DATA CONTAINED IN THIS DRAWING WAS BASED ON INFORMATION AVAILABLE AT THE TIME OF ITS PREPARATION. APS NEITHER ENCOURAGES RELIANCE ON, NOR WARRANTS, THE ACCURACY OF THE DRAWING. PLEASE CALL BLUE STAKE BEFORE DIGGING OR TRENCHING. FAILURE TO CONTACT BLUE STAKE MAY RESULT IN VIOLATIONS OF A.R.S. SS 40-360.21 AND 40-360.22A

Contact Arizona 811 at least two full working days before you begin excavation

Call 811 or click Arizona811.com

T	01.0N	R	02.0E	Sec	14	NE	1/4	MAP#	8-22
T	01.0N	R	02.0E	Sec	14	SE	1/4	MAP#	7-22
T	01.0N	R	02.0E	Sec	13	NW	1/4	MAP#	8-23
T	01.0N	R	02.0E	Sec	13	SW	1/4	MAP#	7-23
T	R	Sec	1/4	MAP#					

CONTACT: BOBBY GARZA
PHONE: 602-371-7989 PGR/MOBILE:
INSPECTOR: CHARLIE CRAWFORD
PHONE: 602-371-6512 PGR/MOBILE:

NO.	DATE	DESCRIPTION	BY

aps 27TH AVE: BUCKEYE TO LOWER BUCKEYE
CITY OF PHOENIX STREET LIGHTING

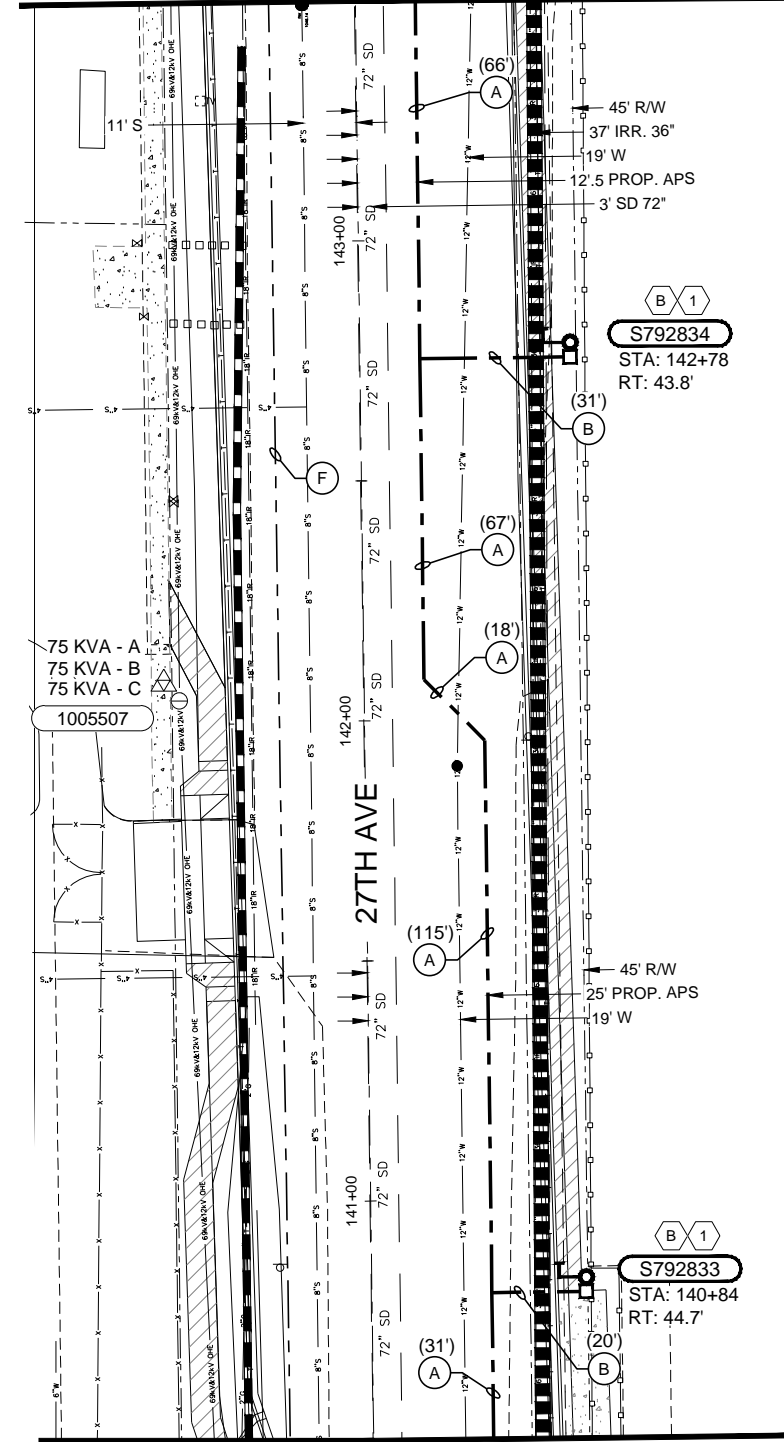
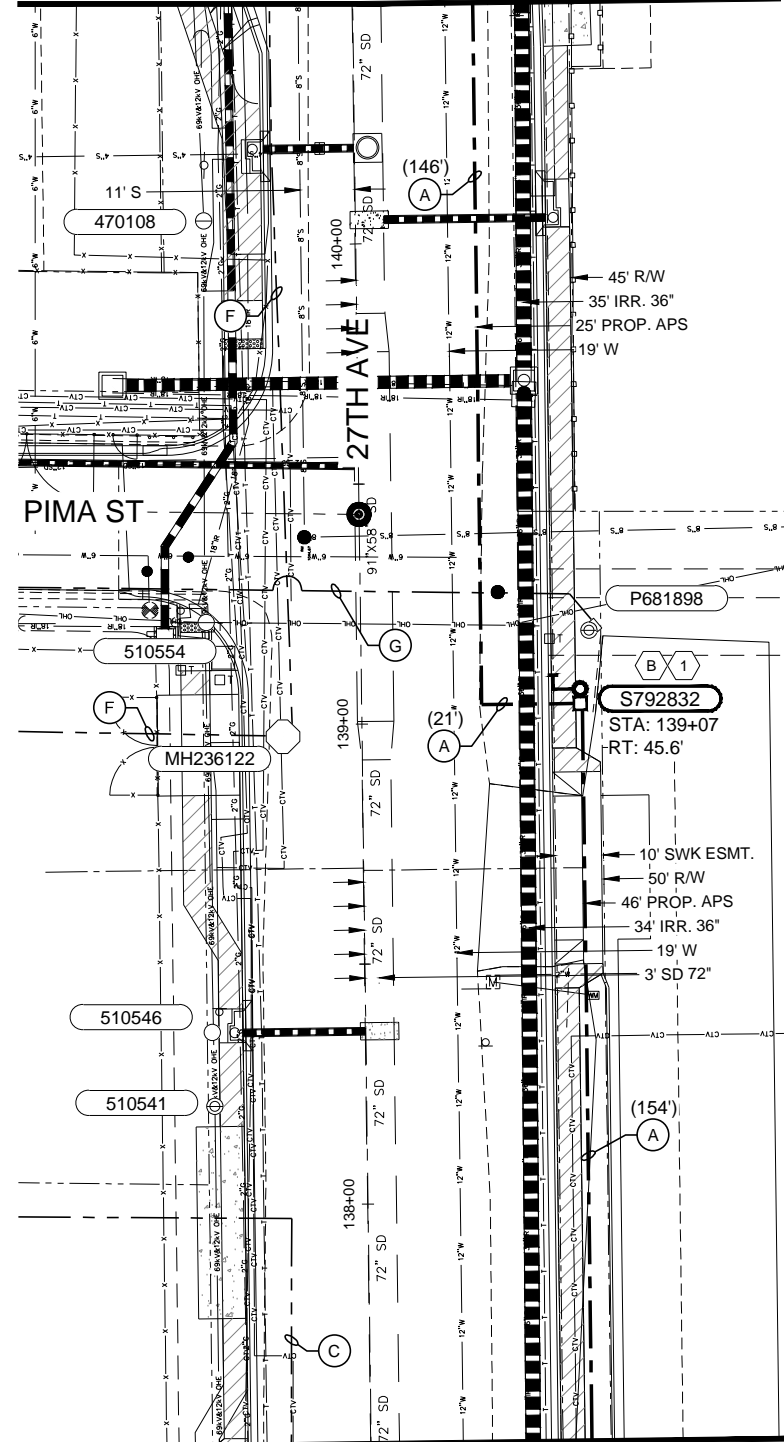
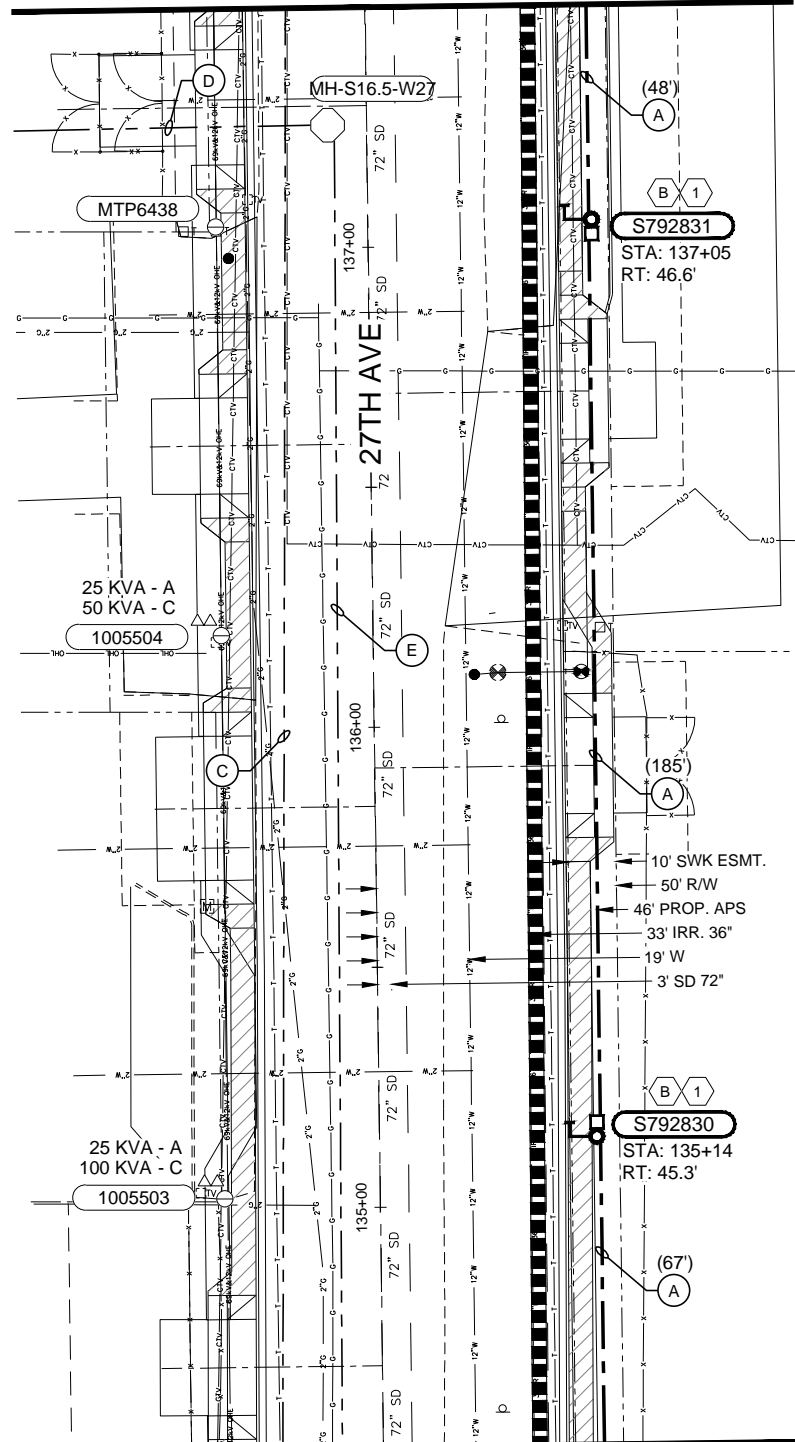
WO#: WA410049 DATE: 11/30/2018
BY: ARUSI (JA) SCALE: 1:20
FILENAME: WA410049.DWG SHEET 5 OF 8

CITY OF PHOENIX
 STREET LIGHTING
 27TH AVE IMPROVEMENTS
 LOWER BUCKEYE TO BUCKEYE
 CITY PROJECT:ST85100341
 APS PROJECT:WA410049

MATCHLINE STA:137+50 SEE BOTTOM MIDDLE

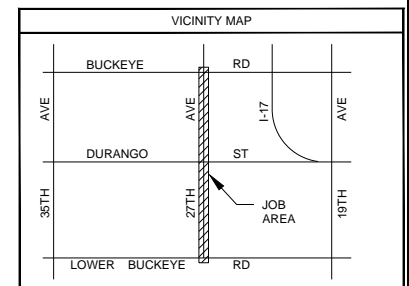
MATCHLINE STA:140+50 SEE BOTTOM RIGHT

MATCHLINE STA:143+50 SEE SHEET 7



TRENCH & CABLE NOTES:
 (APPLIES TO THIS SHEET ONLY)

- 1-UA1/0AL-2.5"
- (A) = (SL1) 918"
- 2-UA1/0AL-2.5*(2)
- (B) = (SL2) 51"
- (C) = 18-UA750T-DU5*(6)
- (D) = 18-UA750T-DU5*(6)+DU5*(2)
- (E) = 9-UA750T-DU5*(3)+DU5"
- (F) = 6-UA750T-DU5*+DU5*(4)
- (G) = 1-UA1/0T-2"



T	01.0N	R	02.0E	Sec	14	NE	1/4	MAP#	8-22
T	01.0N	R	02.0E	Sec	14	SE	1/4	MAP#	7-22
T	01.0N	R	02.0E	Sec	13	NW	1/4	MAP#	8-23
T	01.0N	R	02.0E	Sec	13	SW	1/4	MAP#	7-23

T	R	Sec	1/4	MAP#
CONTACT: BOBBY GARZA				
PHONE: 602-371-7989 PGR/MOBILE:				
INSPECTOR: CHARLIE CRAWFORD				
PHONE: 602-371-6512 PGR/MOBILE:				
NO.	DATE	DESCRIPTION	BY	
27TH AVE: BUCKEYE TO LOWER BUCKEYE CITY OF PHOENIX STREET LIGHTING				
WO#:	WA410049	DATE:	11/30/2018	
BY:	ARUSI (JA)	SCALE:	1:20	
FILENAME:	WA410049.DWG	SHEET	6 OF 8	

CONSTRUCTION NOTES:

- 5 LOC. THIS SHEET (1)
- INSTALL CITY OF PHOENIX TO PROVIDE & INSTALL POLE, MAST ARM & LUMINAIRE.
- APS TO PROVIDE & INSTALL: 2727.3L (2) (120/240V) 2729.A3L 8140.4
- APS TO PROVIDE & CITY TO INSTALL: 8655.NL 8881.EQL (2)

Contact Arizona 811 at least two full working days before you begin excavation

Call 811 or click Arizona811.com

WARNING!!!

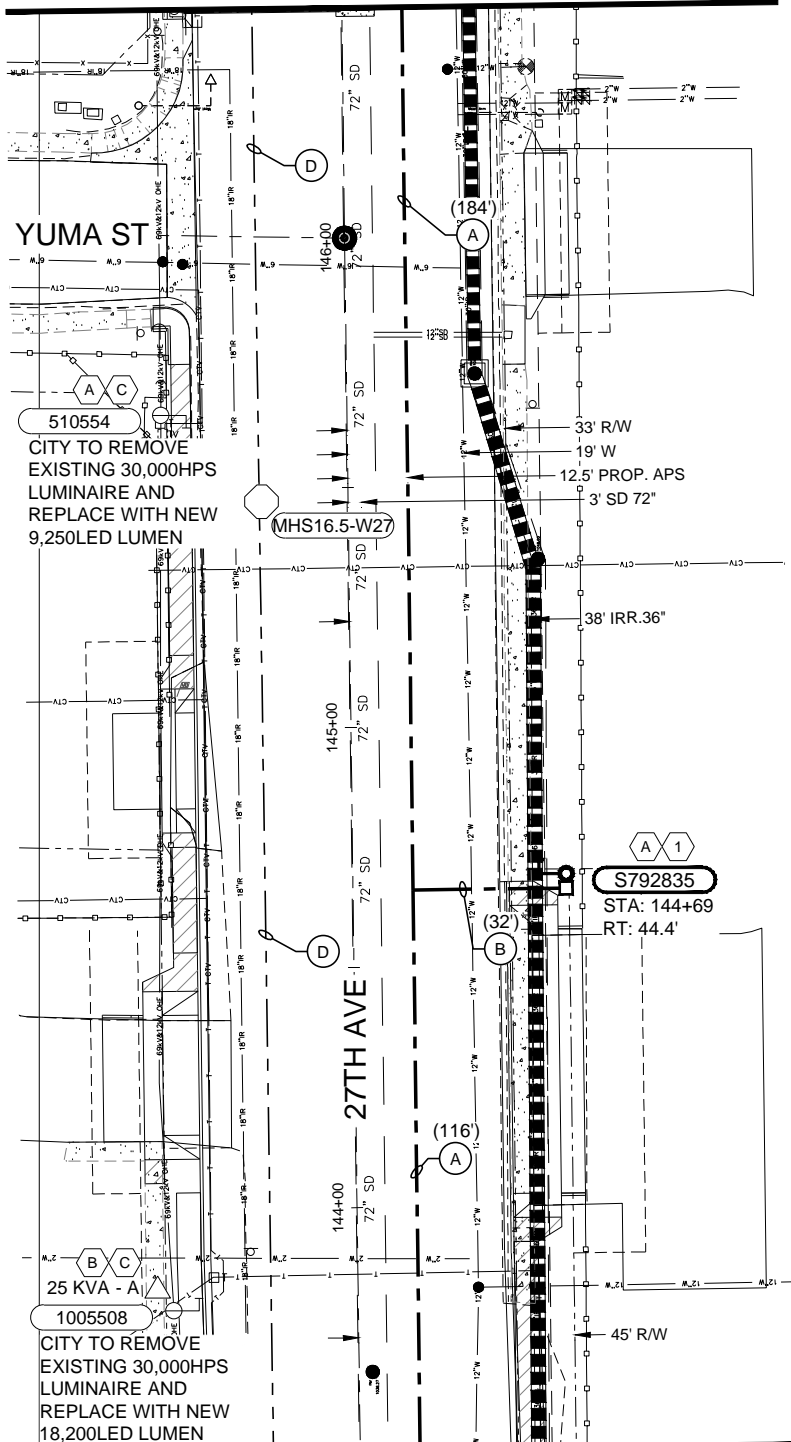
ALL DATA CONTAINED IN THIS DRAWING WAS BASED ON INFORMATION AVAILABLE AT THE TIME OF ITS PREPARATION. APS NEITHER ENCOURAGES RELIANCE ON, NOR WARRANTS, THE ACCURACY OF THE DRAWING. PLEASE CALL BLUE STAKE BEFORE DIGGING OR TRENCHING. FAILURE TO CONTACT BLUE STAKE MAY RESULT IN VIOLATIONS OF A.R.S. SS 40-360.21 AND 40-360.22A

MATCHLINE STA:134+50 SEE SHEET 5

MATCHLINE STA:137+50 SEE TOP RIGHT

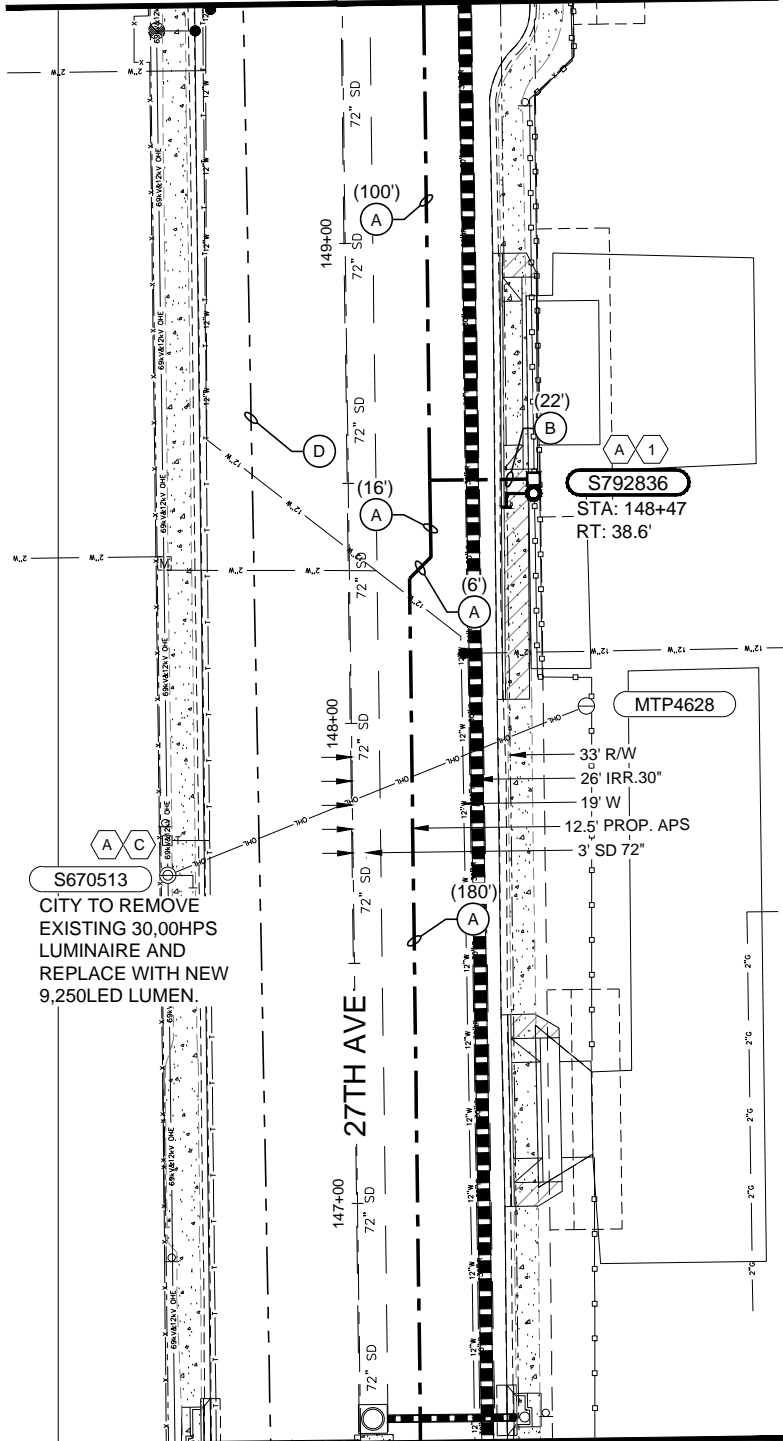
MATCHLINE STA:137+50 SEE TOP MIDDLE

MATCHLINE STA:146+50 SEE BOTTOM MIDDLE

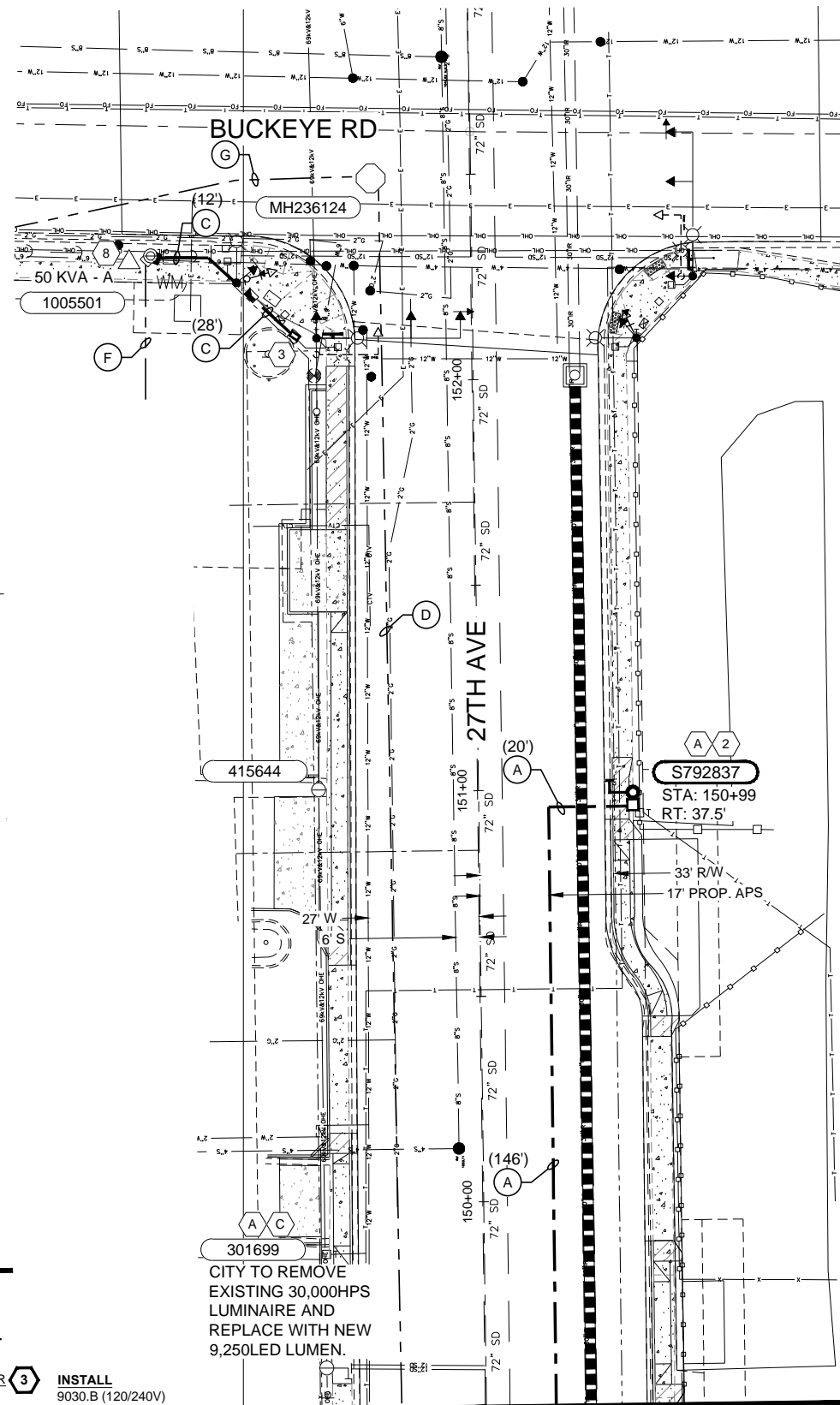


MATCHLINE STA:143+50 SEE SHEET 6

MATCHLINE STA:149+50 SEE BOTTOM RIGHT



MATCHLINE STA:146+50 SEE TOP RIGHT



MATCHLINE STA:149+50 SEE TOP MIDDLE

CITY OF PHOENIX
STREET LIGHTING
27TH AVE IMPROVEMENTS
LOWER BUCKEYE TO BUCKEYE
CITY PROJECT:ST85100341
APS PROJECT:WA410049

TRENCH & CABLE NOTES:
(APPLIES TO THIS SHEET ONLY)

- 1-UA1/0AL-2.5"
- (A) =
- 2-UA1/0AL-2.5(2)
- (B) =
- 1-UA1/0AV-2.5"
- (C) =
- (D) = 6-UA750T-5(2)+DU5(4)
- (E) = 6-UA750T-5(2)
- (F) = 3-250A

CONSTRUCTION NOTES:

2 LOC. THIS SHEET

1 INSTALL
CITY OF PHOENIX TO PROVIDE & INSTALL
POLE, MAST ARM & LUMINAIRE.
APS TO PROVIDE & INSTALL:
2727.3L (2) (120/240V)
2729.A3L
8140.4
APS TO PROVIDE & CITY TO INSTALL:
8655.NL
8881.EQL (2)

METER

3 INSTALL
9030.B (120/240V)
2702.V
8881.EQV

1 LOC. THIS SHEET

2 INSTALL
CITY OF PHOENIX TO PROVIDE & INSTALL
POLE, MAST ARM & LUMINAIRE.
APS TO PROVIDE & INSTALL:
2727.3L (120/240V)
2729.A3L
8140.4
APS TO PROVIDE & CITY TO INSTALL:
8655.NL
8881.EQL

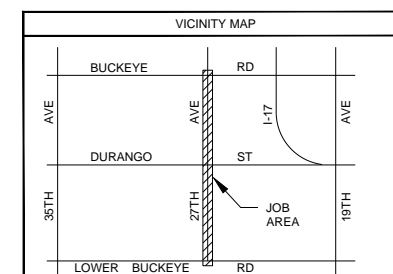
1005511

8 INSTALL
5050.G1UA1/0AV (120/240V)

WARNING!!!

ALL DATA CONTAINED IN THIS DRAWING WAS BASED ON INFORMATION AVAILABLE AT THE TIME OF ITS PREPARATION. APS NEITHER ENCOURAGES RELIANCE ON, NOR WARRANTS, THE ACCURACY OF THE DRAWING. PLEASE CALL BLUE STAKE BEFORE DIGGING OR TRENCHING. FAILURE TO CONTACT BLUE STAKE MAY RESULT IN VIOLATIONS OF A.R.S. SS 40-360.21 AND 40-360.22A

Contact Arizona 811 at least two full working days before you begin excavation



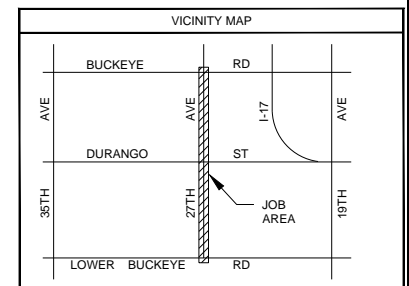
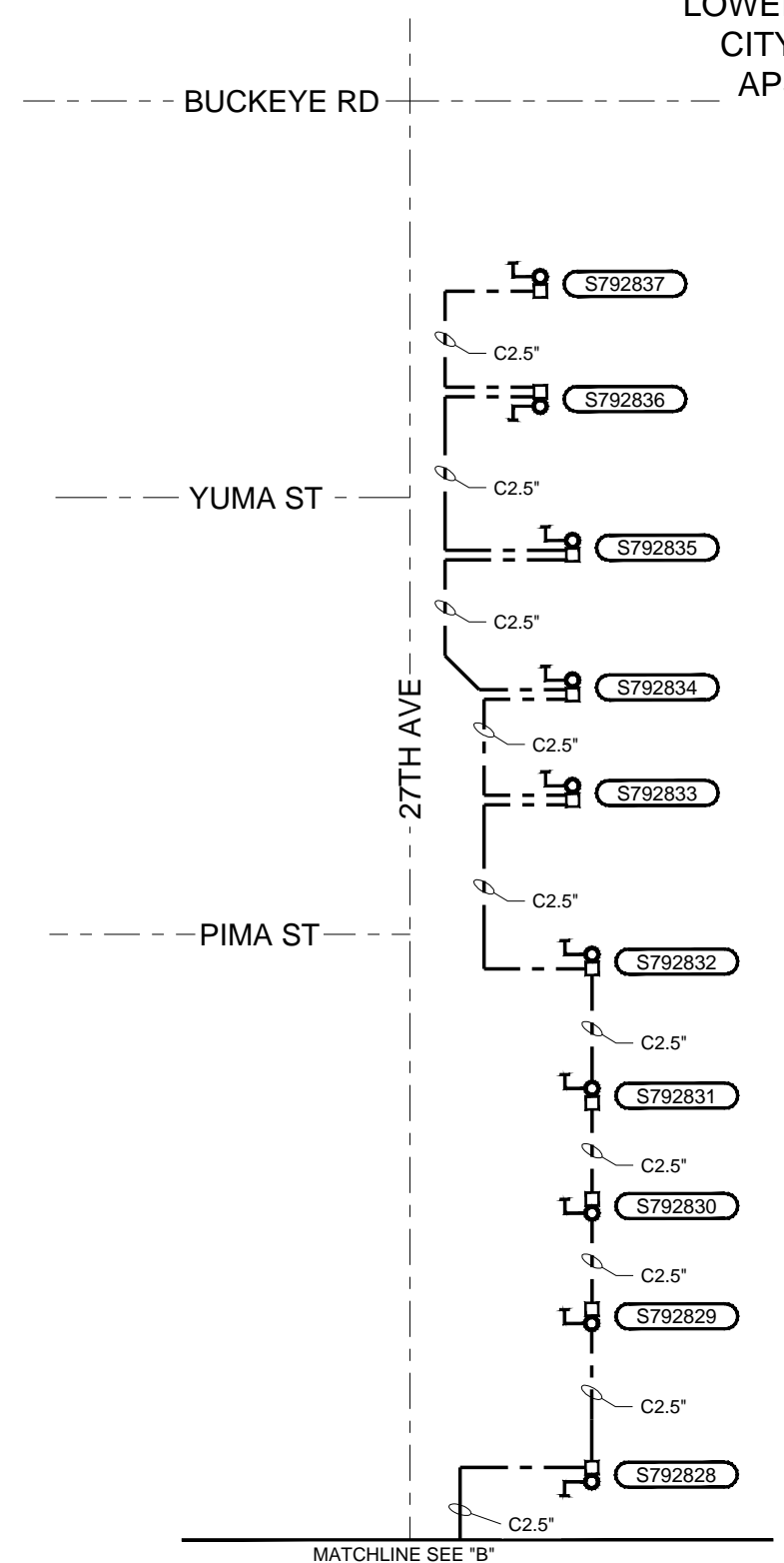
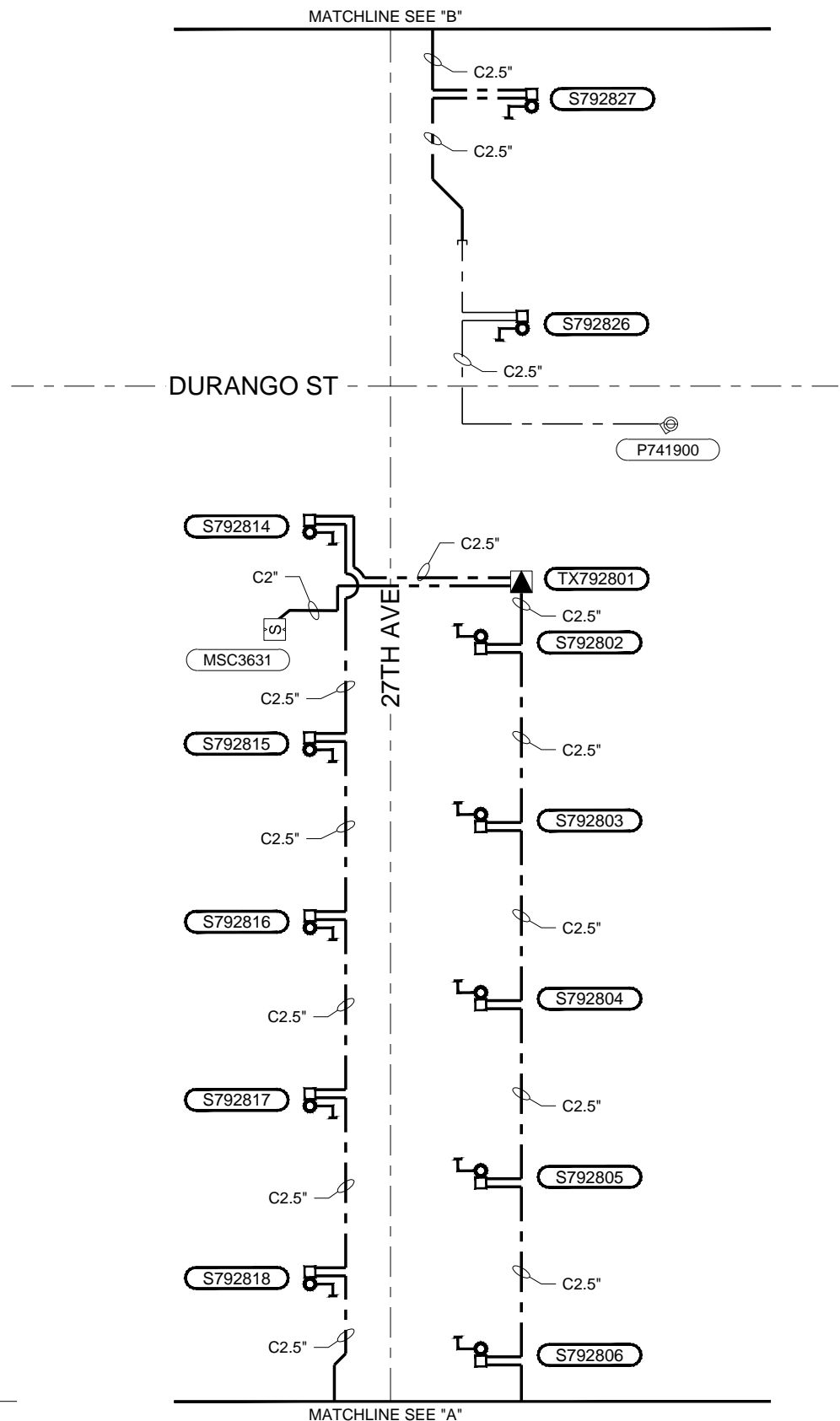
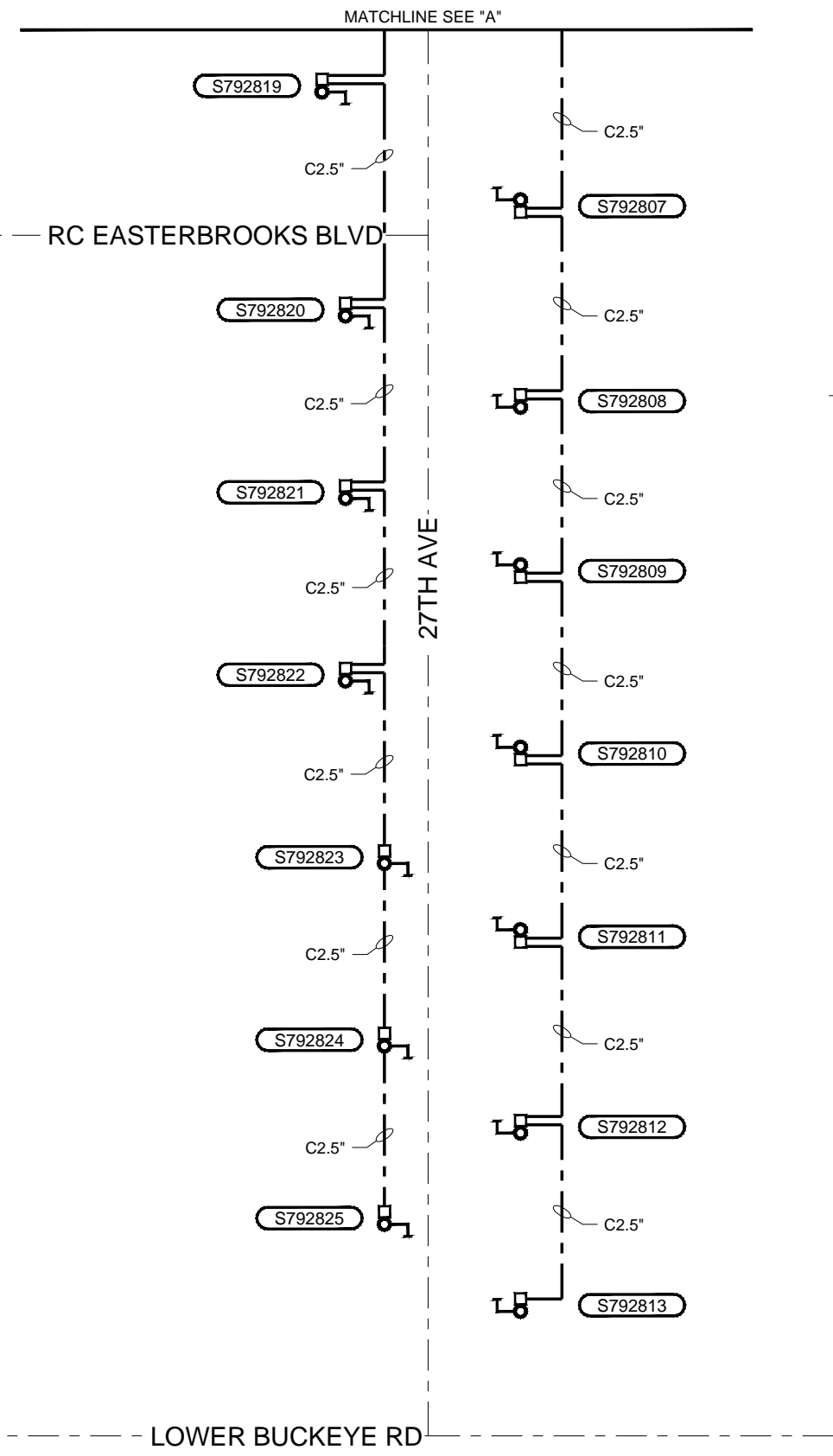
T	01.0N	R	02.0E	Sec 14	NE 1/4	MAP# 8-22
T	01.0N	R	02.0E	Sec 14	SE 1/4	MAP# 7-22
T	01.0N	R	02.0E	Sec 13	NW 1/4	MAP# 8-23
T	01.0N	R	02.0E	Sec 13	SW 1/4	MAP# 7-23
T	R	Sec	1/4	MAP#		

CONTACT: BOBBY GARZA
PHONE: 602-371-7989 PGR/MOBILE:
INSPECTOR: CHARLIE CRAWFORD
PHONE: 602-371-6512 PGR/MOBILE:

NO.	DATE	DESCRIPTION	BY
27TH AVE: BUCKEYE TO LOWER BUCKEYE CITY OF PHOENIX STREET LIGHTING			
WO#:	WA410049	DATE:	11/30/2018
BY:	ARUSI (JA)	SCALE:	1:20
FILENAME:	WA410049.DWG	SHEET	7 OF 8

CITY OF PHOENIX
STREET LIGHTING
27TH AVE IMPROVEMENTS
LOWER BUCKEYE TO BUCKEYE
CITY PROJECT:ST85100341
APS PROJECT:WA410049

STREET LIGHT
CONDUIT DIAGRAM



T 01.0N	R 02.0E	Sec 14	NE 1/4	MAP# 8-22
T 01.0N	R 02.0E	Sec 14	SE 1/4	MAP# 7-22
T 01.0N	R 02.0E	Sec 13	NW 1/4	MAP# 8-23
T 01.0N	R 02.0E	Sec 13	SW 1/4	MAP# 7-23
T	R	Sec	1/4	MAP#

CONTACT: BOBBY GARZA
PHONE: 602-371-7989 PGR/MOBILE:
INSPECTOR: CHARLIE CRAWFORD
PHONE: 602-371-6512 PGR/MOBILE:

NO.	DATE	DESCRIPTION	BY

aps 27TH AVE: BUCKEYE TO LOWER BUCKEYE
CITY OF PHOENIX STREET LIGHTING

WO#: WA410049 DATE: 11/30/2018
BY: ARUSI (JA) SCALE: 1:20
FILENAME: WA410049.DWG SHEET 8 OF 8

WARNING!!!
ALL DATA CONTAINED IN THIS DRAWING WAS BASED ON INFORMATION AVAILABLE AT THE TIME OF IT'S PREPARATION. APS NEITHER ENCOURAGES RELIANCE ON, NOR WARRANTS, THE ACCURACY OF THE DRAWING. PLEASE CALL BLUE STAKE BEFORE DIGGING OR TRENCHING. FAILURE TO CONTACT BLUE STAKE MAY RESULT IN VIOLATIONS OF A.R.S. SS 40-360.21 AND 40-360.22A

Contact Arizona 811 at least two full working days before you begin excavation

Call 811 or click Arizona811.com

